

E2-Tag Mouse Monoclonal Antibody(14F8)

Catalog	TDY013C	TDY013F
Quantity	50 μ L	100 μ L

Tel: 010-82908854
Free: 400-0620-621
Web: www.tdybio.com

For research use only.

Applications	Species	Cross-Reactivity	Molecular Weight	Isotype
WB		N/A	N/A	IgG1

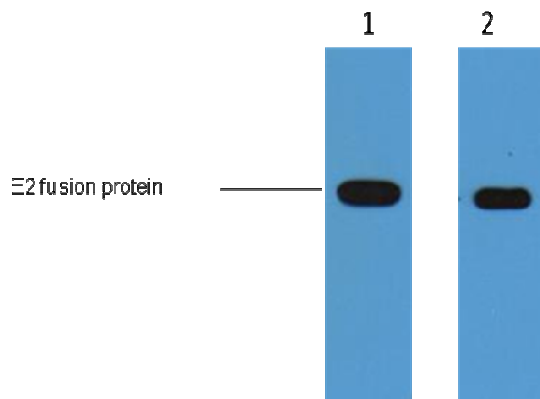
Storage Buffer & Condition: PBS, pH 7.4, containing 0.02% **sodium azide** as Preservative and 50% Glycerol.
Store at **-20°C**. **Do not aliquot the antibody.**

Recommended dilutions: WB: 1:5,000

Optimal dilutions should be determined by the end user.

Specificity: The E2 tag antibody can recognize E2 tag fusion proteins.

Background: E2-tag peptide GVSSTSSDFRDR conjugated to KLH. E2- Tag antibody can recognize C-terminal, internal, and N-terminal E2-tagged proteins.



2 μ g E2 fusion protein+ Primary antibody dilution at

1、 1:5,000

2、 1:10,000