

mCherry-Tag Rabbit Polyclonal Antibody

Catalog	TDY027C	TDY027F	Tel: 010-82908854
Quantity	50 μ L	100 μ L	Free: 400-0620-621
			Web: www.tdybio.com

For research use only.

Applications	Species Cross-Reactivity	Molecular Weight	Isotype
WB,	N/A	N/A	IgG

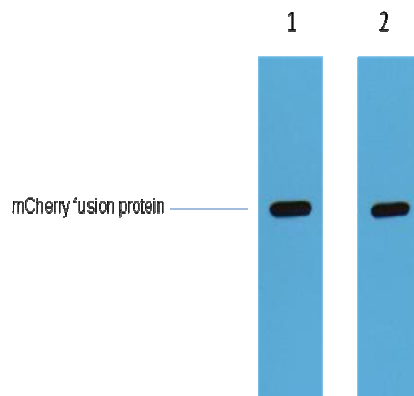
Storage Buffer & Condition: PBS, pH 7.4, containing 0.02% **sodium azide** as Preservative and 50% Glycerol.
Store at **-20°C**. **Do not aliquot the antibody.**

Recommended dilutions: WB: 1:5,000

Optimal dilutions should be determined by the end user.

Specificity: The mCherry tag antibody can recognize mCherry tag fusion proteins.

Background: mCherry is a fluorophore (a fluorescent molecule) used in biotechnology as a tracer to follow the flow of fluids, as a marker when tagged to molecules and cells components. mCherry is a monomeric fluorescent construct with peak absorption/emission at 587 nm and 610 nm, respectively. It is resistant to photobleaching and is stable. mCherry is sometimes preferred to other fluorophores due to its colour, as well as its photostability compared to other monomeric fluorophores.



1 μ g mCherry fusion protein+ Primary antibody dilution at

1、 1:5,000

2、 1:10,000