

MeCP2 Rabbit Polyclonal Antibody

Catalog TDY068C TDY068F

Tel: 010-82908854

Quantity 50μL 100μL

Free: 400-0620-621

Web: www.tdybio.com

For research use only.

Applications	Species Cross-Reactivity	Molecular Weight	Isotype
WB	H	~53KD	IgG

Storage Buffer & Condition: PBS, pH 7.4, containing 0.02% **sodium azide** as Preservative and 50% Glycerol.

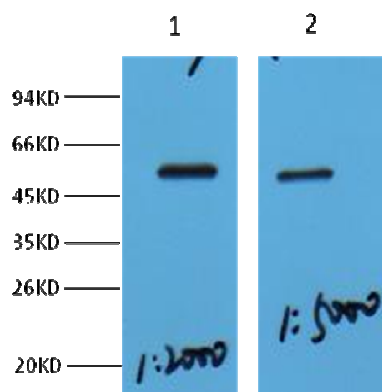
Store at **-20°C**. **Do not aliquot the antibody.**

Recommended dilutions: WB: 1:2,000

Optimal dilutions should be determined by the end user.

Specificity: MeCP2 antibody detects endogenous MeCP2 proteins.

Background: Methyl-CpG-binding protein 2(MeCP2), whose exact function is unclear. It appears to help regulate gene activity (expression) by modifying chromatin, the complex of DNA and protein that packages DNA into chromosomes. The MeCP2 protein usually regulates genes involved in brain function, even though this protein is found throughout the body. Within the brain, the MeCP2 protein is important for the function of nerve cells (neurons) and is present in high levels in mature neurons. This protein likely plays a role in maintaining connections (synapses) between neurons, where cell-to-cell communication occurs. Many of the genes that are known to be regulated by the MeCP2 protein play a role in normal brain function, particularly the maintenance of synapses.



Western blot analysis of HeLa with MeCP2 Rabbit pAb diluted at

1, 1:2,000

2, 1:5,000