

CK8 Mouse Monoclonal Antibody(8G8)

| | | |
|----------|------------|-------------|
| Catalog | TDY078C | TDY078F |
| Quantity | 50 μ L | 100 μ L |

Tel: 010-82908854
Free: 400-0620-621
Web: www.tdybio.com

For research use only.

| Applications | Species Cross-Reactivity | Molecular Weight | Isotype |
|--------------|--------------------------|------------------|---------|
| WB, IHC | H,M,R | ~54KD | IgG1 |

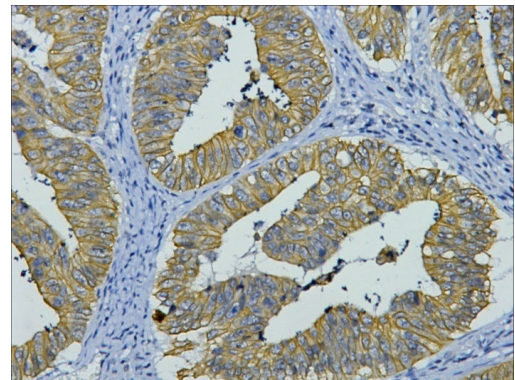
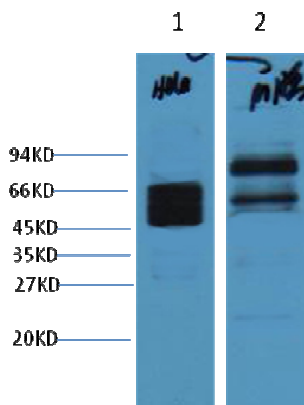
Storage Buffer & Condition: PBS, pH 7.4, containing 0.02% **sodium azide** as Preservative and 50% Glycerol.
Store at **-20°C**. **Do not aliquot the antibody.**

Recommended dilutions: WB: 1:2,000-5,000 IHC: 1:200

Optimal dilutions should be determined by the end user.

Specificity: The CK8 Mouse Monoclonal antibody detects endogenous CK8 proteins.

Background: Cytokeratin 8 belongs to the type B (basic) subfamily of high molecular weight keratins and exists in combination with cytokeratin 18. Cytokeratin 8 is primarily found in the non squamous epithelia and is present in majority of adenocarcinomas and ductal carcinomas. It is absent in squamous cell carcinomas.



Western blot analysis of 1) Hela, 2) Mouse Brain with CK8 mAb diluted at 1:4,000.

IHC staining of human colon cancer tissue with CK8 mouse mAb(8G8) diluted at 1:200.