

## Carcinoembryonic Antigen/CEA Mouse Monoclonal Antibody (10E1)

Catalog TDY084C TDY084F

Tel: 010-82908854

Quantity 50 $\mu$ L 100 $\mu$ L

Free: 400-0620-621

Web: www.tdybio.com

**For research use only.**

| Applications | Species | Cross-Reactivity | Molecular Weight | Isotype |
|--------------|---------|------------------|------------------|---------|
| IHC          | H       | H                | ~113KD           | IgG1    |

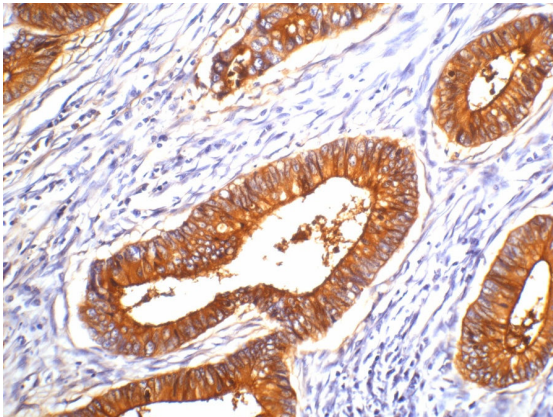
**Storage Buffer & Condition:** PBS, pH 7.4, containing 0.02% **sodium azide** as Preservative and 50% Glycerol.  
Store at **-20°C**. **Do not aliquot the antibody.**

**Recommended dilutions:** IHC: 1:200

**Optimal dilutions should be determined by the end user.**

**Specificity:** The CEA Mouse Monoclonal Antibody detects endogenous CEA proteins.

**Background:** CEA is synthesised during development in the fetal gut, and is re-expressed in increased amounts in intestinal carcinomas and several other tumors. Antibodies to CEA are useful in identifying the origin of various metastatic adenocarcinomas and in distinguishing pulmonary adenocarcinomas (60 to 70% are CEA+) from pleural mesotheliomas (rarely or weakly CEA+).



IHC staining of human colon cancer tissue with CEA mouse mAb(10E1)  
diluted at 1:200.