

Kif 7 Mouse Monoclonal Antibody(3F8)

Catalog	TDY086C	TDY086F
Quantity	50 μ L	100 μ L

Tel: 010-82908854
Free: 400-0620-621
Web: www.tdybio.com

For research use only.

Applications	Species Cross-Reactivity	Molecular Weight	Isotype
IHC	H,M,R	N/A	IgG1

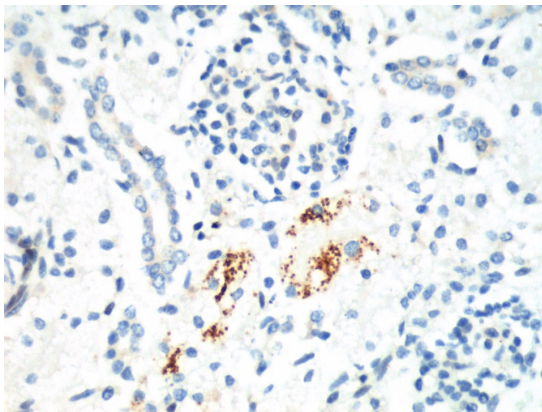
Storage Buffer & Condition: PBS, pH 7.4, containing 0.02% **sodium azide** as Preservative and 50% Glycerol.
Store at **-20°C**. **Do not aliquot the antibody.**

Recommended dilutions: IHC: 1:200

Optimal dilutions should be determined by the end user.

Specificity: The Kif 7 Mouse Monoclonal antibody detects endogenous Kif 7 proteins.

Background: A **kinesin** is a protein belonging to a class of motor proteins found in eukaryotic cells. Kinesins move along microtubule filaments, and are powered by the hydrolysis of ATP (thus kinesins are ATPases). Kinesins were discovered as microtubule (MT)-based anterograde intracellular transport motors. The founding member of this superfamily, kinesin-1, was isolated as a heterotetrameric fast axonal organelle transport motor consisting of 2 identical motor subunits (KHC) and 2 "light chains" (KLC) via microtubule affinity purification from neuronal cell extracts.



IHC staining of Mouse Kidney tissue with Kif 7 mouse mAb(3F8) diluted at 1:200.