

## Ki 67 Mouse Monoclonal Antibody(4A8)

Catalog	TDY087C	TDY087F	Tel: 010-82908854
Quantity	50 $\mu$ L	100 $\mu$ L	Free: 400-0620-621
			Web: www.tdybio.com

**For research use only.**

Applications	Species Cross-Reactivity	Molecular Weight	Isotype
IHC	H,M,R	N/A	IgG1

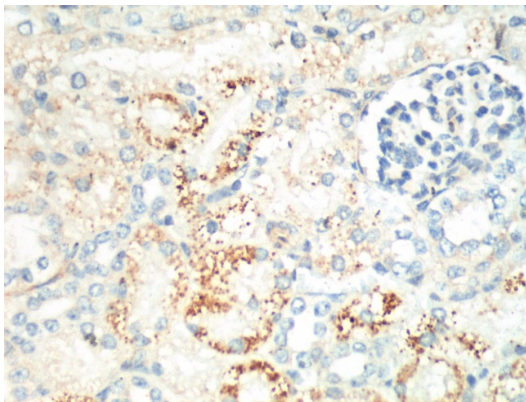
**Storage Buffer & Condition:** PBS, pH 7.4, containing 0.02% **sodium azide** as Preservative and 50% Glycerol.  
Store at **-20°C**. **Do not aliquot the antibody.**

**Recommended dilutions:** IHC: 1:200

**Optimal dilutions should be determined by the end user.**

**Specificity:** The Ki 67 Mouse Monoclonal antibody detects endogenous Ki 67 proteins.

**Background:** Antigen KI-67 is a nuclear protein that is associated with and may be necessary for cellular proliferation. Furthermore it is associated with ribosomal RNA transcription. Inactivation of antigen KI-67 leads to inhibition of ribosomal RNA synthesis. The **Ki-67** protein (also known as **MKI67**) is a cellular marker for proliferation. It is strictly associated with cell proliferation. During interphase, the Ki-67 antigen can be exclusively detected within the cell nucleus, whereas in mitosis most of the protein is relocated to the surface of the chromosomes. Ki-67 protein is present during all active phases of the cell cycle (G<sub>1</sub>, S, G<sub>2</sub>, and mitosis), but is absent from resting cells (G<sub>0</sub>).



IHC staining of Mouse Kidney tissue with Ki 67 mouse mAb(4A8) diluted at 1:200.