

## $\beta$ -Catenin Mouse Monoclonal Antibody(13C6)

Catalog	TDY088C	TDY088F
Quantity	50 $\mu$ L	100 $\mu$ L

Tel: 010-82908854  
Free: 400-0620-621  
Web: www.tdybio.com

**For research use only.**

Applications	Species Cross-Reactivity	Molecular Weight	Isotype
WB,IHC	H,M,R	~92KD	IgG1

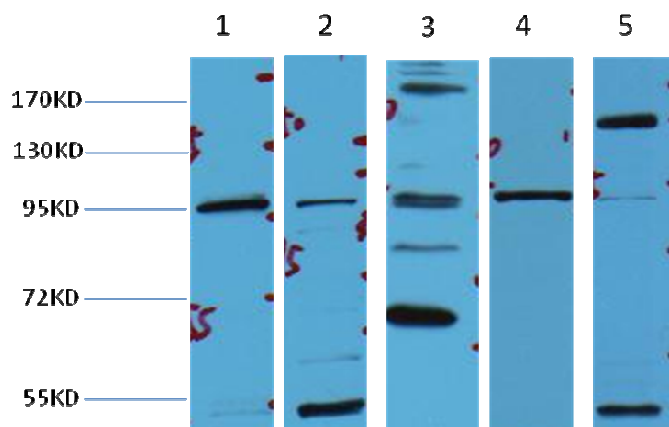
**Storage Buffer & Condition:** PBS, pH 7.4, containing 0.02% **sodium azide** as Preservative and 50% Glycerol.  
Store at **-20°C. Do not aliquot the antibody.**

**Recommended dilutions:** WB: 1:1,000 IHC: 1:200

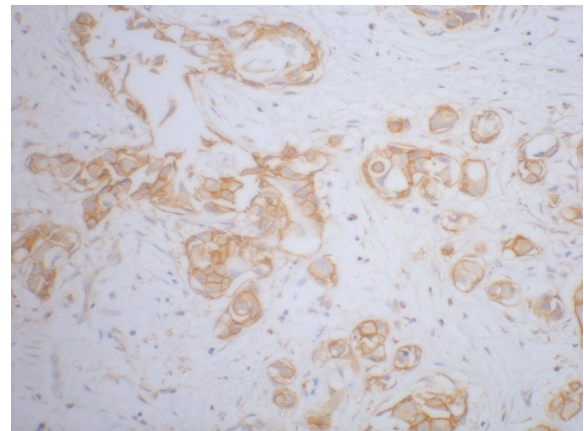
**Optimal dilutions should be determined by the end user.**

**Specificity:** The  $\beta$ -Catenin Mouse Monoclonal antibody detects endogenous  $\beta$ -Catenin proteins.

**Background:** The distinct peripheral cytosolic proteins, alpha, beta and gamma catenin (102, 94 and 86 kDa) are found in many tissues and bind to the conserved cytoplasmic tail domain of the cell adhesion cadherins. Catenins link E cadherin to other integral membrane or cytoplasmic proteins and are modulated by Wnt1 proto oncogene. The central core region of beta catenin is involved in mediation of cadherin catenin complex interaction with EGFR. Beta-Catenin-mediated signalling is involved at several stages of vertebrate neural development.



Western blot analysis of 1) Hela, 2) 293T, 3) MCF7, 4) Mouse Brain tissue, 5) Rat Liver Tissue with  $\beta$ -Catenin mAb diluted at 1:2,000.



IHC staining of human breast cancer tissue with  $\beta$ -Catenin mouse mAb(13C6) diluted at 1:200.