

COX2/Cyclooxygenase 2 Rabbit Polyclonal Antibody

| | | |
|----------|------------|-------------|
| Catalog | TDY092C | TDY092F |
| Quantity | 50 μ L | 100 μ L |

Tel: 010-82908854
Free: 400-0620-621
Web: www.tdybio.com

For research use only.

| Applications | Species Cross-Reactivity | Molecular Weight | Isotype |
|--------------|--------------------------|------------------|---------|
| WB, IHC | H | ~70KD | IgG1 |

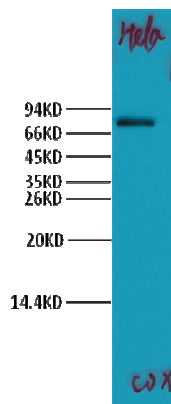
Storage Buffer & Condition: PBS, pH 7.4, containing 0.02% **sodium azide** as Preservative and 50% Glycerol.
Store at **-20°C**. **Do not aliquot the antibody.**

Recommended dilutions: WB: 1:1,000 IHC: 1:100

Optimal dilutions should be determined by the end user.

Specificity: The COX2 Rabbit Polyclonal antibody detects endogenous COX2 proteins.

Background: Prostaglandin-endoperoxide synthase 2, also known as cyclooxygenase-2 or simply COX-2, is an enzyme that in humans is encoded by the PTGS2 gene. There are two isozymes of COX encoded by distinct gene products: a constitutive COX-1 (this enzyme) and an inducible COX-2, which differ in their regulation of expression and tissue distribution. The expression of these two transcripts is differentially regulated by relevant cytokines and growth factors. A splice variant of COX-1 termed COX-3 was identified in the CNS of dogs, but does not result in a functional protein in humans. Two smaller COX-1-derived proteins (the partial COX-1 proteins PCOX-1A and PCOX-1B) have also been discovered, but their precise roles are yet to be described.



Western blot analysis of HeLa with COX2 Rabbit Polyclonal antibody diluted at 1:1,000.