

Glucocorticoid receptor/GR Rabbit Polyclonal Antibody

Catalog TDY113C TDY113F

Tel: 010-82908854

Quantity 50 μ L 100 μ L

Free: 400-0620-621

Web: www.tdybio.com

For research use only.

Applications	Species	Cross-Reactivity	Molecular Weight	Isotype
WB		H,M,R	80-97KD	IgG

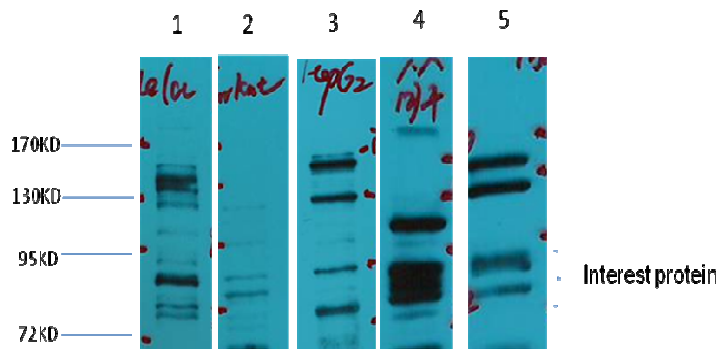
Storage Buffer & Condition: PBS, pH 7.4, containing 0.02% **sodium azide** as Preservative and 50% Glycerol.
Store at **-20°C**. **Do not aliquot the antibody.**

Recommended dilutions: WB: 1:1,000-3,000

Optimal dilutions should be determined by the end user.

Specificity: The GR Rabbit Polyclonal antibody detects endogenous GR proteins.

Background: The **glucocorticoid receptor (GR or GCR)**. The GR is expressed in almost every cell in the body and regulates genes controlling the development, metabolism, and immune response. Because the receptor gene is expressed in several forms, it has many different (pleiotropic) effects in different parts of the body.



Western blot analysis of 1) Hela, 2) Jurkat, 3) HepG2, 4) Mouse Liver tissue, 5) Rat Brain tissue, with GR Rabbit pAb diluted at 1:2,000.