

Plant-actin Mouse Monoclonal Antibody(Q30)

Catalog TDY047C TDY047F

Tel: 010-82908854

Quantity 50 μ L 100 μ L

Free: 400-0620-621

Web: www.tdybio.com

For research use only.

| Applications | Species Cross-Reactivity | Molecular Weight | Isotype |
|--------------|--------------------------|------------------|---------|
| WB | Various Plants | 43KD | IgG1 |

Storage Buffer & Condition: PBS, pH 7.4, containing 0.02% **sodium azide** as Preservative and 50% Glycerol.
Store at **-20°C**. **Do not aliquot the antibody.**

Recommended dilutions: WB: 1:2,000-5,000

Optimal dilutions should be determined by the end user.

Specificity: Antibody can detects endogenous plant β -actin protein.

Alternative Names: N/A

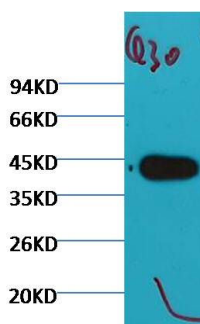
Background: Actin is a highly conserved protein and an essential component of cell cytoskeleton and plays an important role in cytoplasmic streaming, cell shape determination, cell division, organelle movement and extension growth. Preferentially expressed in young and expanding tissues, floral organ primordia, developing seeds and emerging inflorescence. Antibodies against plant Actin are useful as loading controls for Western Blotting.

Reactivity:

Arabidopsis, Nicotiana tabacum, Oryza sativa, Hordeum vulgare

Predicted to work with:

Brassica napus, Gossypium herbaceum, Solanum tuberosum, Setaria italic, Triticum monococcum, Brachypodium distachyon, Chrysanthemum seticuspe, Glycine max, Mangifera, Thellungiella halophila, Zoysia japonica, Isatis tinctoria.



Western blot analysis of Arabidopsis with plant actin Mouse mAb (Q30) diluted at 1:5,000