

α tubulin Mouse Monoclonal Antibody(Zebrafish Specific)

Catalog	TDY143C	TDY143F	Tel: 010-82908854
			Free: 400-0620-621
Quantity	50 μ L	100 μ L	Web: www.tdybio.com

For research use only.

Applications	Species Cross-Reactivity	Molecular Weight	Isotype
WB	Zebrafish	52KD	IgG1

Storage Buffer & Condition: PBS, pH 7.4, containing 0.02% **sodium azide** as Preservative and 50% Glycerol.
Store at **-20°C**. **Do not aliquot the antibody.**

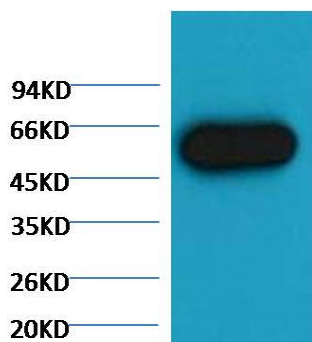
Recommended dilutions: WB: 1:5,000-10,000

Optimal dilutions should be determined by the end user.

Specificity: The α -tubulin antibody can detects Zebrafish endogenous α -tubulin protein.

Alternative Names: alpha tubulin 2, B alpha 1, H2 alpha, Hum a tub 1, TUBA1, TUBA1A, Tubulin alpha 1 chain

Background: Tubulin is one of several members of a small family of globular proteins. The tubulin superfamily includes five distinct families, the alpha-, beta-, gamma-, delta-, and epsilon-tubulins. The most common members of the tubulin family are α -tubulin and β -tubulin, the proteins that make up microtubules. Each has a molecular weight of approximately 55 KD. Microtubules are assembled from dimers of α - and β -tubulin.



Western blot analysis of Zebrafish skeletal muscle with α tubulin Mouse mAb(Zebrafish Specific) diluted at 1:5,000.