

## $\beta$ -actin Mouse Monoclonal Antibody(Zebrafish Specific)

Catalog	TDY149C	TDY149F	Tel: 010-82908854
			Free: 400-0620-621
Quantity	50 $\mu$ L	100 $\mu$ L	Web: www.tdybio.com

**For research use only.**

Applications	Species Cross-Reactivity	Molecular Weight	Isotype
WB, IHC, IF	Zebrafish	43KD	IgG1

**Storage Buffer & Condition:** PBS, pH 7.4, containing 0.02% **sodium azide** as Preservative and 50% Glycerol.

Store at **-20°C**. **Do not aliquot the antibody.**

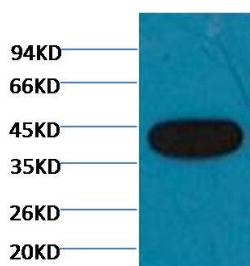
**Recommended dilutions:** WB: 1:2,000-5,000 IHC: 1:200 IF: 1:200

**Optimal dilutions should be determined by the end user.**

**Specificity:** Antibody can detect Zebrafish endogenous  $\beta$ -actin protein.

**Alternative Names:** actin antibody, b-actin antibody, beta-actin antibody

**Background:**  $\beta$ -actin is one of six different actin isoforms that have been identified. The actin molecules found in cells of various species and tissues tend to be very similar in their immunological and physical properties. Therefore, antibodies against  $\beta$ -actin are useful as loading controls for Western Blotting. However it should be noted that levels of  $\beta$ -actin may not be stable in certain cells. For example, expression of  $\beta$ -actin in adipose tissue is very low and therefore  $\beta$ -actin should not be used as loading control for these tissues.



Western blot analysis of Zebrafish skeletal muscle with TDY149 diluted at 1:3,000.