

Goat anti-Mouse IgG (Fc γ specific, Heavy Chain), HRP Conjugated

Catalog S002F

Tel: 010-82908854

Quantity 100 μ L

Free: 400-0620-621

Web: www.tdybio.com

For research use only.

Applications	Species Cross-Reactivity	Molecular Weight	Isotype
WB, IHC	Mouse	N/A	IgG

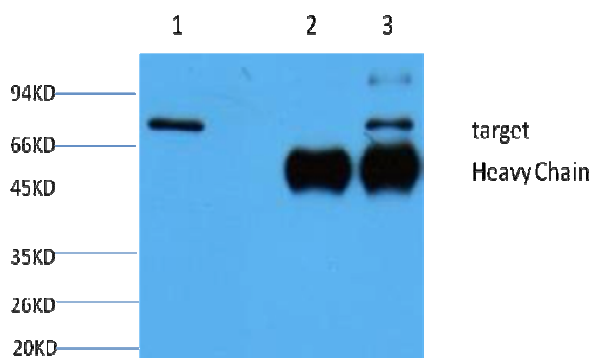
Storage Buffer & Condition: PBS, pH 7.4, 15mg/ml **Bovine Serum Albumin** as Stabilizer and 50% Glycerol.
Store at **-20°C. Do not aliquot the antibody.**

Recommended dilutions: WB: 1:2,000-5,000 IHC: 1:100-500

Optimal dilutions should be determined by the end user.

Specificity: The antibody reacts with the Fc portion of mouse IgG heavy chain but not with the Fab portion of mouse immunoglobulins. The antibody minimal cross-reaction with **bovine, horse, human** serum proteins, but it may cross-react with immunoglobulins from other species.

Note: **Avoid use of Sodium azide as a preservative, it will substantially inhibit the enzyme activity of HRP.**



1. Input

2. Normal IgG control

3. IP product

Western blot analysis: primary antibody : mouse monoclonal

Secondary antibody: Goat anti-Mouse IgG, Fc fragment specific, 1:5000