

## Bcl-2 Mouse Monoclonal Antibody(6B5)

Catalog	TDY061C	TDY061F
Quantity	50 $\mu$ L	100 $\mu$ L

Tel: 010-82908854  
Free: 400-0620-621  
Web: www.tdybio.com

**For research use only.**

Applications	Species Cross-Reactivity	Molecular Weight	Isotype
WB, IHC, IF	H, R, M	26KD	IgG1

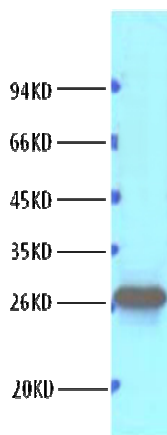
**Storage Buffer & Condition:** PBS, pH 7.4, containing 0.02% **sodium azide** as Preservative and 50% Glycerol.  
Store at **-20°C**. **Do not aliquot the antibody.**

**Recommended dilutions:** WB: 1:1,000~2,000    IHC: 1:200    IF: 1:100-200

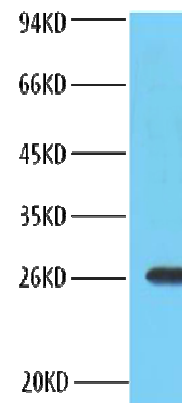
**Optimal dilutions should be determined by the end user.**

**Specificity:** Bcl-2 antibody detects endogenous Bcl-2 proteins.

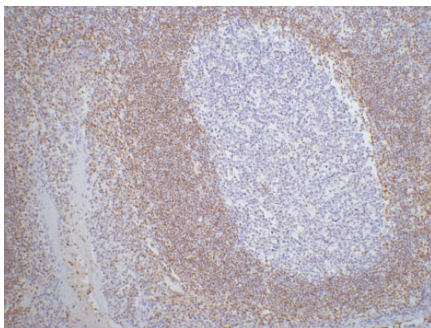
**Background:** BCL2 is an integral outer mitochondrial membrane protein that blocks the apoptotic death of some cells such as lymphocytes. Constitutive expression of BCL2, such as in the case of translocation of BCL2 to Ig heavy chain locus, is thought to be the cause of follicular lymphoma. BCL2 suppresses apoptosis in a variety of cell systems including factor-dependent lymphohematopoietic and neural cells. It regulates cell death by controlling the mitochondrial membrane permeability.



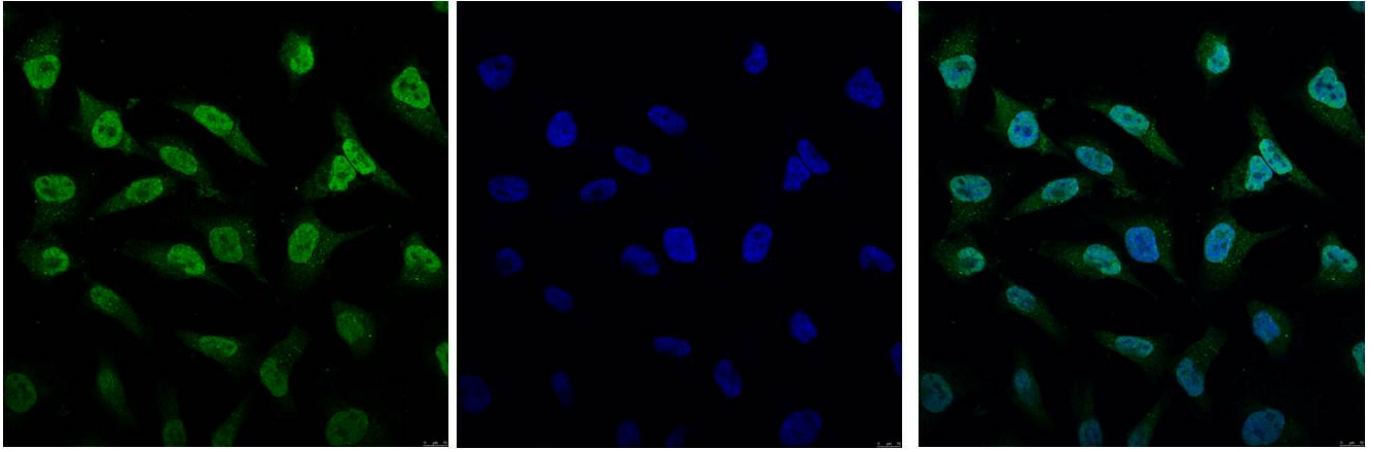
Western blot analysis of HeLa with Bcl-2 mouse mAb(6B5) diluted at 1:1,000.



Western blot analysis of 3T3 with Bcl-2 mouse mAb(6B5) diluted at 1:1,000.



IHC staining of Human tonsil tissue paraffin-embedded with Bcl-2 mouse mAb (6B5) diluted at 1:200.



*IF analysis of HeLa with TDY061(Left) and DAPI (Right) diluted at 1:100.*