

Bovine Serum Albumin Rabbit Polyclonal Antibody

Catalog	TDY218C	TDY218F
Quantity	50 μ L	100 μ L

Tel: 010-82908854
Free: 400-0620-621
Web: www.tdybio.com

For research use only.

Applications	Species Cross-Reactivity	Molecular Weight	Isotype
WB, ELISA	Cow, (H)	66KD	IgG

Storage Buffer & Condition: PBS, pH 7.4, containing 0.02% **sodium azide** as Preservative and 50% Glycerol.
Store at **-20°C**. **Do not aliquot the antibody.**

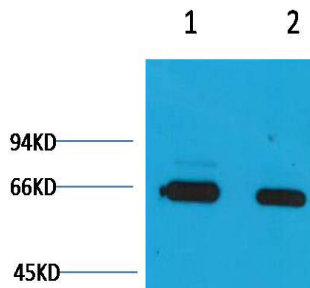
Recommended dilutions: WB: 1:2,000-5,000

Optimal dilutions should be determined by the end user.

Specificity: The Bovine Serum Albumin antibody can detects endogenous BSA protein.

Alternative Names: BSA antibody, ALB antibody, Albumin antibody, HSA antibody, PRO0883 antibody, Serum Albumin antibody

Background: Bovine serum albumin (also known as **BSA** or "**Fraction V**") is a serum albumin protein derived from cows. It is often used as a protein concentration standard in lab experiments. Albumin is a soluble, monomeric protein which comprises about one-half of the blood serum protein.



Western blot analysis of Bovine Serum Albumin with TDY218 Rabbit pAb
diluted at

- 1) 1:2,000
- 2) 1:5,000