

## $\beta$ -actin Mouse Monoclonal Antibody(5B7)

Catalog	TDY041C	TDY041F
Quantity	50 $\mu$ L	100 $\mu$ L

Tel: 010-82908854  
Free: 400-0620-621  
Web: www.tdybio.com

**For research use only.**

Applications	Species Cross-Reactivity	Molecular Weight	Isotype
WB, IHC, IF	H, R, M, Mk, Dg, Ch, Hm, Rb, Pg, Sh Insect	43KD	IgG1

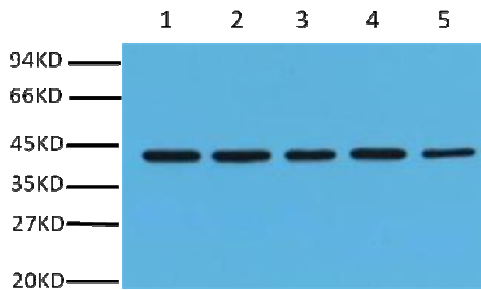
**Storage Buffer & Condition:** PBS, pH 7.4, containing 0.02% **sodium azide** as Preservative and 50% Glycerol.  
Store at **-20°C**. **Do not aliquot the antibody.**

**Recommended dilutions:** WB: 1:5,000 IHC: 1:200 IF: 1:200

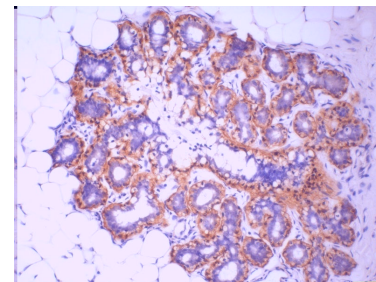
**Optimal dilutions should be determined by the end user.**

**Specificity:** Antibody can detects endogenous  $\beta$ -actin protein.

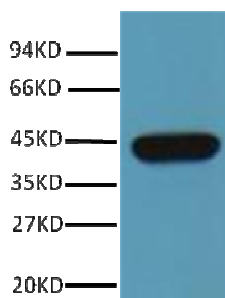
**Background:**  $\beta$ -Actin is one of six different actin isoforms that have been identified. The actin molecules found in cells of various species and tissues tend to be very similar in their immunological and physical properties. Therefore, Antibodies against  $\beta$ -Actin are useful as loading controls for Western Blotting. However it should be noted that levels of  $\beta$ -Actin may not be stable in certain cells. For example, expression of  $\beta$ -Actin in adipose tissue is very low and therefore  $\beta$ -Actin should not be used as loading control for these tissues.



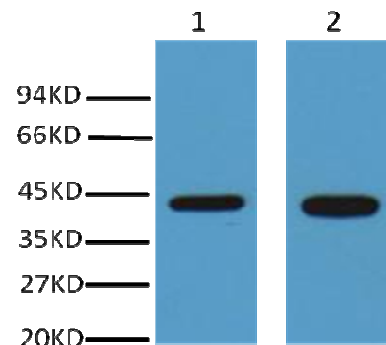
Western blot analysis of HeLa (1) Rat brain (2) Mouse brain (3) Chicken lung (4) and Rabbit testis (5) with  $\beta$ -Actin mouse mAb(5B7) diluted at 1:10,000.



IHC Staining of Human ovary tissue with  $\beta$ -Actin mouse mAb(5B7) diluted at 1:200



Western blot analysis of Hamster Kidney with  $\beta$ -Actin mouse mAb(5B7) diluted at 1:10,000.



Western blot analysis of 293T(1) , NIH3T3(2) , with  $\beta$ -Actin mouse mAb(5B7) diluted at 1:10,000.