

PEPC (Phospho Ser15) Rabbit Polyclonal Antibody

Catalog	TDY320C	TDY320F
Quantity	50 μ L	100 μ L

Tel: 010-82908854
Free: 400-0620-621
Web: www.tdybio.com

For research use only.

Applications	Species Cross-Reactivity	Molecular Weight	Isotype
WB	A. comosus, A. thaliana, H. vulgare, J. curcas, M. crystallinum, N. tabacum, Z. mays, T. weissfloggi, P. tricornutum (strain CCAP 1055/1), Synechocystis PCC 6803	105-110KD	IgG

Storage Buffer & Condition: Immunogen Affinity Purified Rabbit IgG, 1mg/ml in PBS pH7.4, containing 0.02% **sodium azide** as Preservative and 50% Glycerol.

Store at **-20°C. Do not aliquot the antibody.**

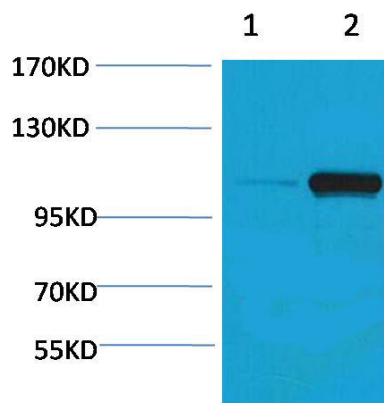
Recommended dilutions: WB: 1:1,000-2,000

Optimal dilutions should be determined by the end user.

Specificity: The PEPC(Phospho Ser15) Antibody can detects endogenous PEPC(Phospho Ser15) protein.

Alternative Names: PEPCase 1, PEPCase 3, PEPC 1, PEPC 3, phosphoenolpyruvate carboxylase

Background: PEPC (phosphoenolpyruvate carboxylase), belongs to an enzyme family of carboxy-lyases that is catalyzing adding fo carbon dioxide to phosphoenolpyruvate (PEP) to form oxaloacetate.



Western blot analysis of Maize 1)Dark, 2)Light, with phospho-PEPC Rabbit pAb TDY320 diluted at 1:2,000.