



EBFP Mouse Monoclonal Antibody(Mix-mA™)

| | | |
|----------|---------|---------|
| Catalog | TDY325C | TDY325F |
| Quantity | 50μL | 100μL |

Tel: 010-82908854
Free: 400-0620-621
Web: www.tdybio.com

For research use only.

| Applications | Species Cross-Reactivity | Molecular Weight | Isotype |
|--------------|--------------------------|------------------|---------|
| WB, IHC, IP | N/A | N/A | IgG |

Storage Buffer & Condition: PBS, pH 7.4, containing 0.02% **sodium azide** as Preservative and 50% Glycerol.
Store at **-20°C**. **Do not aliquot the antibody.**

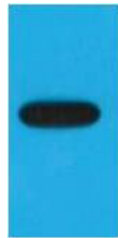
Recommended dilutions: WB: 1:5,000 IHC: 1:200 IP: 1:200

Optimal dilutions should be determined by the end user.

Specificity: The EBFP Mouse Polyclonal Antibody can detects EBFP & EBFP Tag protein.

Alternative Names: BFP, EBFP, Blue Fluorescent Protein, Enhanced Blue Fluorescent Protein

Background: Enhanced Blue Fluorescent Protein (EBFP) emits a strong blue fluorescence. EBFP can be used as protein "tags" to study the sub-cellular localization of proteins and/or their translocation upon stimulation or as markers for transfection in transient and stable expression systems.



Western blot analysis of recombinant EBFP protein with TDY325 diluted at 1:5,000.