

β -tubulin Mouse Monoclonal Antibody(5G3)-HRP Conjugated

Catalog	TDY326C	TDY326F
Quantity	50 μ L	100 μ L

Tel: 010-82908854
Free: 400-0620-621
Web: www.tdybio.com

For research use only.

Applications	Species Cross-Reactivity	Molecular Weight	Isotype
WB, IHC	H, R, M, Mk, Dg, C, Hm, Rb, Sh Insect, Yeast	55KD	IgG1

Storage Buffer & Condition: PBS, pH 7.4, 50% Glycerol. Store at -20°C . **Do not aliquot the antibody.**

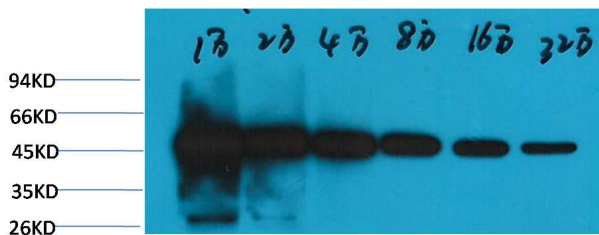
Recommended dilutions: WB: 1:20,000-640,000 IHC: 1:1,000-2,000

Optimal dilutions should be determined by the end user. Avoid using SODIUM AZIDE.

Specificity: The β -tubulin antibody can detect endogenous β -tubulin protein.

Alternative Names: Beta 4 tubulin, TBB5, TUBB2, TUBB2A, tubulin beta 2A, beta tubulin, tubulin beta chain

Background: Microtubules are constituent parts of the mitotic apparatus, cilia, flagella, and elements of the cytoskeleton. They consist principally of 2 soluble proteins, alpha- and beta-tubulin, each of about 55,000 Da. Antibodies against beta Tubulin are useful as loading controls for Western Blotting. However it should be noted that levels of β -Tubulin may not be stable in certain cells. For example, expression of β -Tubulin in adipose tissue is very low and therefore β -Tubulin should not be used as loading control for these tissues.



Western blot analysis of HeLa, with β -tubulin-HRP Conjugated TDY326 diluted at 1:10,000, 20,000, 40,000, 80,000, 160,000, 320,000.