

## $\alpha$ -Smooth Muscle Actin Rabbit Polyclonal Antibody

Catalog	TDY210C	TDY210F
Quantity	50 $\mu$ L	100 $\mu$ L

Tel: 010-82908854  
Free: 400-0620-621  
Web: www.tdybio.com

**For research use only.**

Applications	Species Cross-Reactivity	Molecular Weight	Isotype
WB, IHC	H, R, M	42KD	IgG

**Storage Buffer & Condition:** PBS, pH 7.4, containing 0.02% **sodium azide** as Preservative and 50% Glycerol.  
Store at **-20°C**. **Do not aliquot the antibody.**

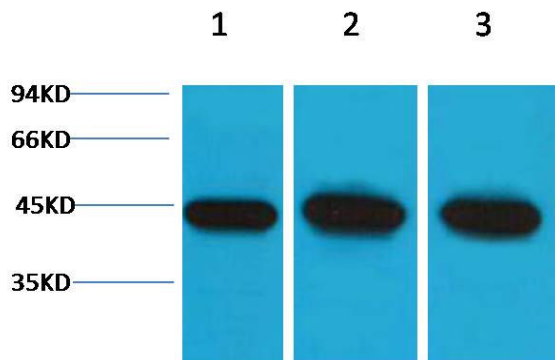
**Recommended dilutions:** WB: 1:2,000-5,000      IHC: 1:500-1,000

**Optimal dilutions should be determined by the end user.**

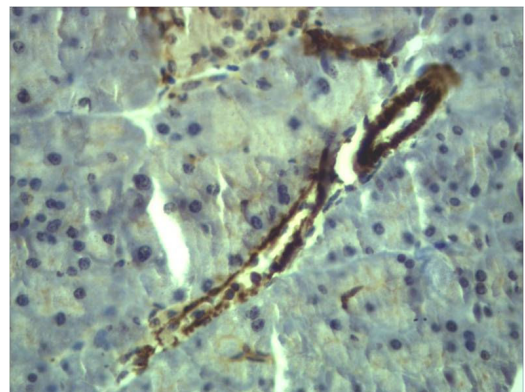
**Specificity:** The  $\alpha$ -Smooth Muscle Actin antibody can detect endogenous  $\alpha$ -Smooth Muscle Actin protein.

**Alternative Names:** AAT6 antibody, ACTA2 antibody, alpha actin 2 antibody, GIG46 antibody, ACTSA antibody, ACTVS antibody

**Background:** Actin is a globular multi-functional protein that forms microfilaments. ACTA2 codes for an  $\alpha$ -actin located in the smooth muscle, and also in vascular smooth muscle.



Western blot analysis of 1) Hela, 2) 3T3, 3) Rat Kidney tissue with TDY210 diluted at 1:5,000.



Immunohistochemical analysis of paraffin-embedded Mouse Colon Tissue using  $\alpha$ -Smooth Muscle Actin (TDY210) Rabbit pAb diluted at 1:500.