

## Cytokeratin 18 Rabbit Polyclonal Antibody

Catalog	TDY220C	TDY220F
Quantity	50 $\mu$ L	100 $\mu$ L

Tel: 010-82908854  
Free: 400-0620-621  
Web: www.tdybio.com

**For research use only.**

Applications	Species Cross-Reactivity	Molecular Weight	Isotype
WB, IHC	H, R, M	~46KD	IgG

**Storage Buffer & Condition:** PBS, pH 7.4, containing 0.02% **sodium azide** as Preservative and 50% Glycerol.  
Store at **-20°C. Do not aliquot the antibody.**

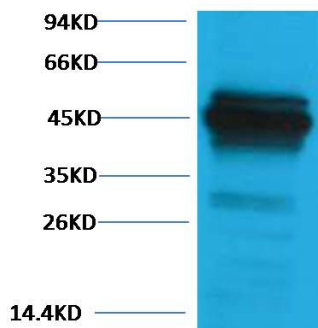
**Recommended dilutions:** WB: 1:1,000-2,000      IHC: 1:500-1,000

**Optimal dilutions should be determined by the end user.**

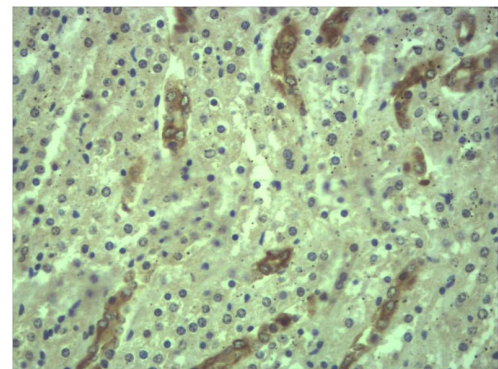
**Specificity:** The Cytokeratin 18 antibody can detect endogenous Cytokeratin 18 protein.

**Alternative Names:** Cell proliferation inducing gene 46 protein, CK 18, CYK 18, K 18, Keratin 18, Keratin D, KRT18

**Background:** Keratin 18 is a type I cytokeratin. It is, together with its filament partner keratin 8, perhaps the most commonly found products of the intermediate filament gene family. They are expressed in single layer epithelial tissues of the body. Mutations in this gene have been linked to cryptogenic cirrhosis. Two transcript variants encoding the same protein have been found for this gene. Keratin 18 is often used together with keratin 8 and keratin 19 to differentiate cells of epithelial origin from hematopoietic cells in tests that enumerate circulating tumor cells in blood.



Western blot analysis of HeLa with TDY220 Rabbit pAb diluted at 1:2,000.



Immunohistochemical analysis of paraffin-embedded Mouse Kidney Tissue using Cytokeratin 18 (TDY220) Rabbit pAb diluted at 1:500.