

β Tubulin Rabbit Polyclonal Antibody

Catalog TDY226C TDY226F

Tel: 010-82908854

Quantity 50μL 100μL

Free: 400-0620-621

Web: www.tdybio.com

For research use only.

Applications	Species Cross-Reactivity	Molecular Weight	Isotype
WB, IHC	H, R, M	~55KD	IgG

Storage Buffer & Condition: PBS, pH 7.4, containing 0.02% **sodium azide** as Preservative and 50% Glycerol.
Store at **-20°C. Do not aliquot the antibody.**

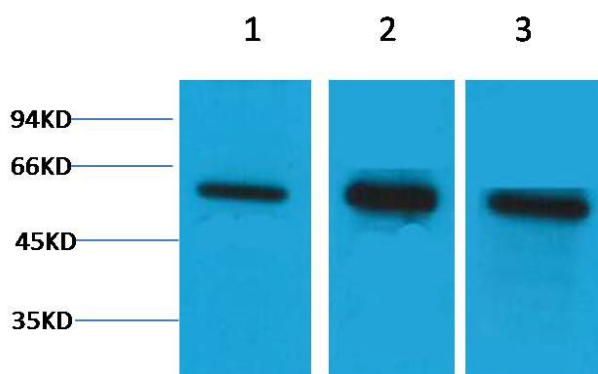
Recommended dilutions: WB: 1:2,000-5,000 IHC: 1:500-1,000

Optimal dilutions should be determined by the end user.

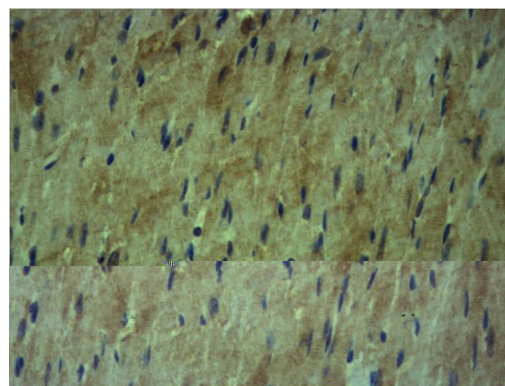
Specificity: The β tubulin Rabbit Polyclonal Antibody can detects endogenous β tubulin protein.

Alternative Names: Beta 4 tubulin, TBB5, TUBB2, TUBB2A, tubulin beta 2A, beta tubulin, tubulin beta chain

Background: Microtubules are constituent parts of the mitotic apparatus, cilia, flagella, and elements of the cytoskeleton. They consist principally of 2 soluble proteins, alpha- and beta-tubulin, each of about 55,000 Da. Antibodies against beta Tubulin are useful as loading controls for Western Blotting. However it should be noted that levels of β-Tubulin may not be stable in certain cells. For example, expression of β-Tubulin in adipose tissue is very low and therefore β-Tubulin should not be used as loading control for these tissues.



Western blot analysis of 1) HeLa, 2) Mouse Brain, 3) Rat Brain tissue with TDY226 diluted at 1:5,000.



Immunohistochemical analysis of paraffin-embedded Mouse Heart Tissue using β-tubulin(TDY226) Rabbit pAb diluted at 1:500.