

## E-Cadherin Rabbit Polyclonal Antibody

|          |            |             |
|----------|------------|-------------|
| Catalog  | TDY329C    | TDY329F     |
| Quantity | 50 $\mu$ L | 100 $\mu$ L |

Tel: 010-82908854  
Free: 400-0620-621  
Web: www.tdybio.com

**For research use only.**

| Applications | Species Cross-Reactivity | Molecular Weight | Isotype |
|--------------|--------------------------|------------------|---------|
| WB, IHC      | H                        | 135KD            | IgG     |

**Storage Buffer & Condition:** PBS, pH 7.4, containing 0.02% **sodium azide** as Preservative and 50% Glycerol.  
Store at **-20°C**. **Do not aliquot the antibody.**

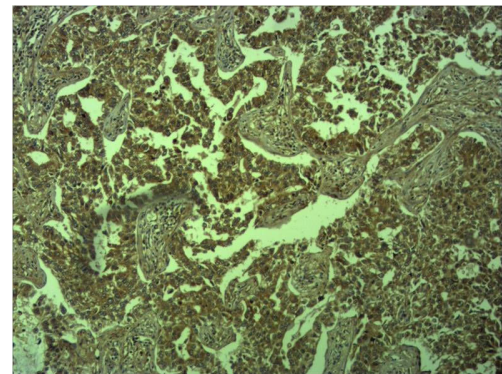
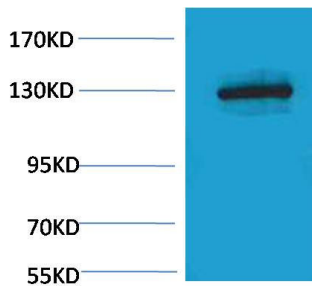
**Recommended dilutions:** WB: 1:1,000      IHC: 1:500-1,000

**Optimal dilutions should be determined by the end user.**

**Specificity:** Antibody can detect endogenous E-Cadherin protein.

**Alternative Names:** CDH-1, Cadherin 1, ECAD, UVO, epithelial calcium dependent adhesion protein, LCAM, CD 234, CD324

**Background:** E-Cadherin is a calcium-dependent cell-cell adhesion glycoprotein composed of five extracellular cadherin repeats, a transmembrane region, and a highly conserved cytoplasmic tail.



Western blot analysis of HeLa, with E-Cadherin Rabbit pAb TDY329 diluted at 1:2,000.

Immunohistochemical analysis of paraffin-embedded human Lung carcinoma using E-Cadherin (TDY329) Rabbit pAb diluted at 1:500.