

EPG5 Rabbit Polyclonal Antibody(21-120)

Catalog	TDY349C	TDY349F	Tel: 010-82908854
Quantity	50 μ L	100 μ L	Web: www.tdybio.com
			Entrez-Gene ID:57724 , Swiss-Prot Acc.Q9HCE0

For research use only.

Applications	Species Cross-Reactivity	Molecular Weight	Isotype
WB, IHC	H, R, M	170-292KD	IgG

Storage Buffer & Condition: Affinity Purified IgG, PBS, pH 7.4, containing 0.02% **sodium azide** as Preservative and 50% Glycerol.

Store at **-20°C**. **Do not aliquot the antibody.**

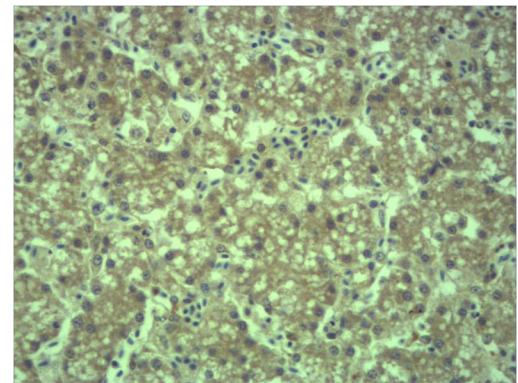
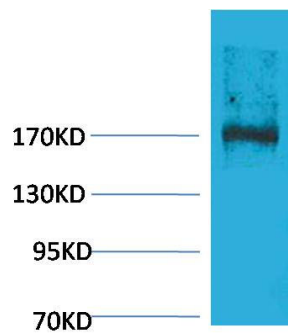
Recommended dilutions: WB: 1:1,000-2,000 IHC: 1:200-500

Optimal dilutions should be determined by the end user.

Specificity: Antibody can detects endogenous EPG5 protein.

Alternative Names: Ectopic P granules autophagy protein 5 homolog antibody, HEEW1 antibody, hEPG5 antibody

Background: N/A.



Western blot analysis of Rat Liver Tissue with EPG5 Rabbit pAb TDY349 diluted at 1:2,000.

Immunohistochemical analysis of paraffin-embedded Mouse Liver Tissue using EPG5(TDY349) Rabbit pAb diluted at 1:500.