

α -tubulin Mouse Monoclonal Antibody(8F11)

Catalog	TDY048C	TDY048F
Quantity	50 μ L	100 μ L

Tel: 010-82908854
Free: 400-0620-621
Web: www.tdybio.com

For research use only.

Applications	Species Cross-Reactivity	Molecular Weight	Isotype
WB, IP, IF, IHC	H, R, M	52KD	IgG1

Storage Buffer & Condition: PBS, pH 7.4, containing 0.02% **sodium azide** as Preservative and 50% Glycerol.
Store at **-20°C**. **Do not aliquot the antibody.**

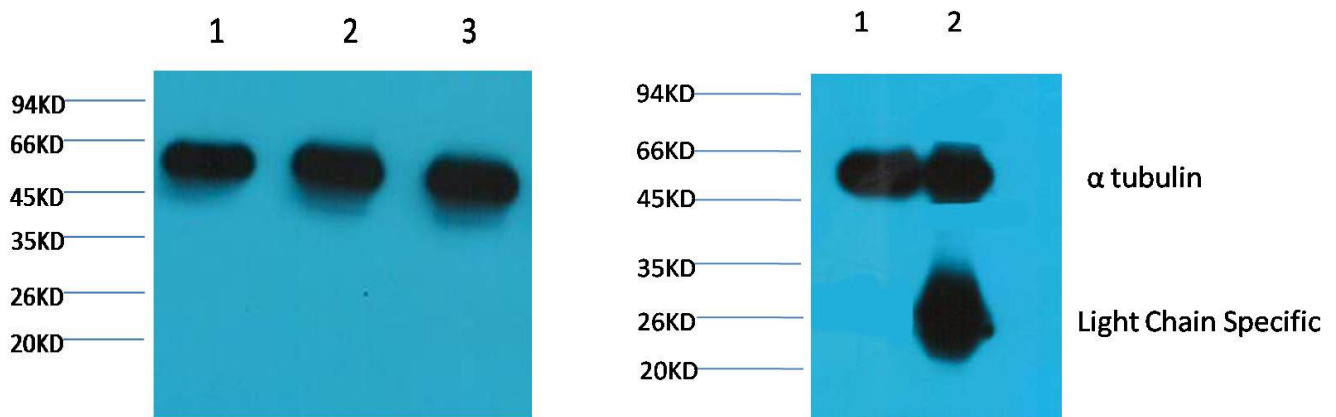
Recommended dilutions: WB: 1:5,000-10,000 IP:1:200 IF: 1:100-200 IHC: 1:200-500

Optimal dilutions should be determined by the end user.

Specificity: The α -tubulin antibody can detect endogenous α -tubulin protein.

Alternative Names: alpha tubulin 2, B alpha 1, H2 alpha, Hum a tub 1, TUBA1, TUBA1A, Tubulin alpha 1 chain

Background: Tubulin is one of several members of a small family of globular proteins. The tubulin superfamily includes five distinct families, the alpha-, beta-, gamma-, delta-, and epsilon-tubulins. The most common members of the tubulin family are α -tubulin and β -tubulin, the proteins that make up microtubules. Each has a molecular weight of approximately 55 KD. Microtubules are assembled from dimers of α - and β -tubulin.



Western blot analysis of 1) HeLa, 2) Rat Brain Tissue, 3) Mouse Brain Tissue with TDY048 diluted at 1:5,000.

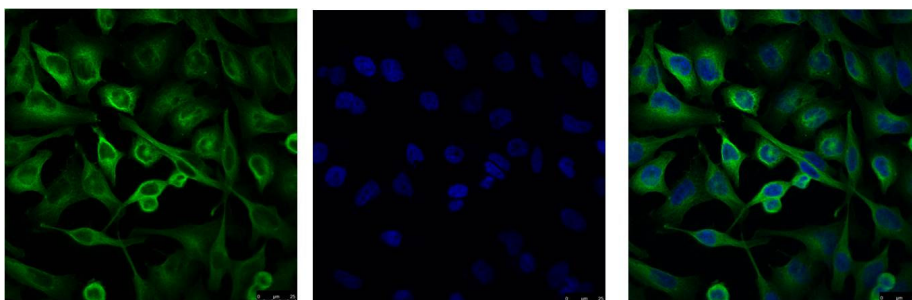
1、Input: Mouse Brain Tissue Lysate

2、IP product: IP dilute 1:200

Western blot analysis: primary antibody : TDY048

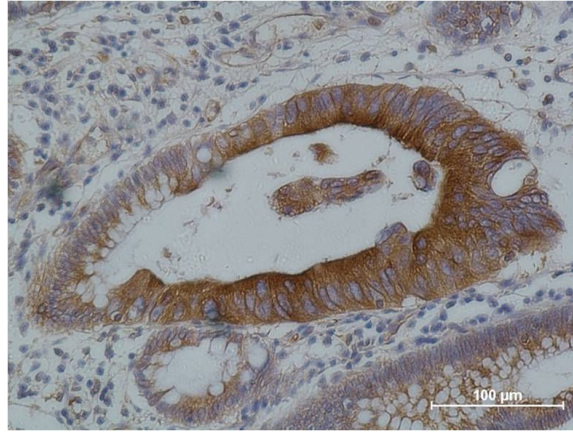
1:5,000

Secondary antibody: Goat anti-Mouse IgG, Light chain specific (S003), 1:5,000



IF analysis of HeLa with TDY048(Left) and DAPI (Right) diluted at 1:100.

Applications: WB-Western blot IHC-Immunocytochemistry IF-Immunofluorescence IP-Immunoprecipitation ChIP-Chromatin Immunoprecipitation
Reactivity: H-Human R-Rat M-Mouse Mk-Monkey Dg-Dog Ch-Chicken Hm-Hamster Rb-Rabbit Sh-Sheep Pg-Pig Z-Zebrafish



Immunohistochemical analysis of paraffin-embedded human Colon carcinoma using α tubulin (TDY048) Mouse mAb diluted at 1:500.