

Cytokeratin 18 Mouse Monoclonal Antibody(1B3)

Catalog	TDY122C	TDY122F
Quantity	50 μ L	100 μ L

Tel: 010-82908854
Free: 400-0620-621
Web: www.tdybio.com

For research use only.

Applications	Species Cross-Reactivity	Molecular Weight	Isotype
WB, IF, IHC	H, R, M	46KD	IgG1

Storage Buffer & Condition: PBS, pH 7.4, containing 0.02% **sodium azide** as Preservative and 50% Glycerol.
Store at **-20°C**. **Do not aliquot the antibody.**

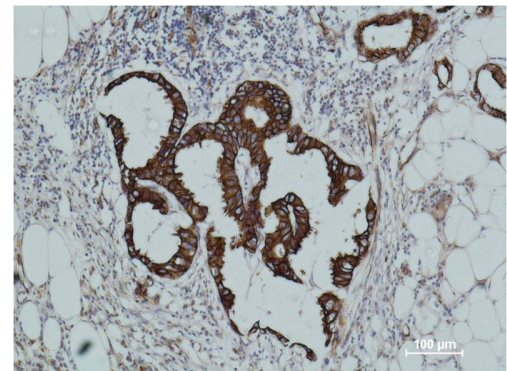
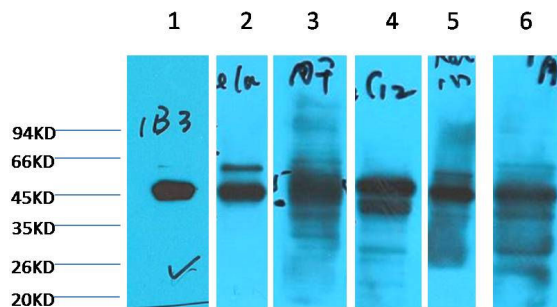
Recommended dilutions: WB: 1:1,000-3,000 IF: 1:100-200 IHC: 1:200-500

Optimal dilutions should be determined by the end user.

Specificity: Antibody can detect endogenous Cytokeratin 18 protein.

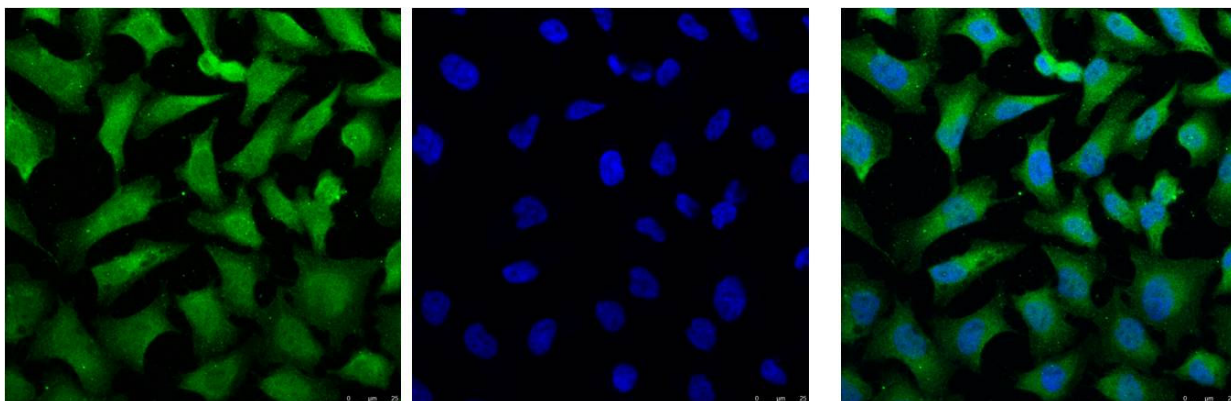
Alternative Names: Cell proliferation inducing gene 46 protein, CK 18, CYK 18, K 18, Keratin 18, Keratin D, KRT18

Background: Keratin 18 is a type I cytokeratin. It is, together with its filament partner keratin 8, perhaps the most commonly found products of the intermediate filament gene family. They are expressed in single layer epithelial tissues of the body. Mutations in this gene have been linked to cryptogenic cirrhosis. Two transcript variants encoding the same protein have been found for this gene. Keratin 18 is often used together with keratin 8 and keratin 19 to differentiate cells of epithelial origin from hematopoietic cells in tests that enumerate circulating tumor cells in blood.



Western blot analysis of 1) HepG2, 2) HeLa, 3) Mouse Liver tissue, 4) C2C12, 5) Rat Heart tissue, 6) Mouse Skeletal Muscle tissue with Cytokeratin 18 Mouse MAb (1B3) diluted at 1:2000.

Immunohistochemical analysis of paraffin-embedded human breast carcinoma using Cytokeratin 18 (TDY122) Mouse mAb diluted at 1:500.



IF analysis of HeLa with TDY122(Left) and DAPI (Right) diluted at 1:100.

Applications: WB-Western blot IHC-Immunohistochemistry IF-Immunofluorescence IP-Immunoprecipitation ChIP-Chromatin Immunoprecipitation
Reactivity: H-Human R-Rat M-Mouse Mk-Monkey Dg-Dog Ch-Chicken Hm-Hamster Rb-Rabbit Sh-Sheep Pg-Pig