

## $\alpha$ -Smooth Muscle Actin Mouse Monoclonal Antibody(6A12)

Catalog TDY341C TDY341F

Tel: 010-82908854

Quantity 50 $\mu$ L 100 $\mu$ L

Web: www.tdybio.com

Entrez-Gene ID: 59 , Swiss-Prot Acc. P62736

**For research use only.**

Applications	Species Cross-Reactivity	Molecular Weight	Isotype
WB, IHC	H, R, M	42KD	IgG1

**Storage Buffer & Condition:** PBS, pH 7.4, containing 0.02% **sodium azide** as Preservative and 50% Glycerol.  
Store at **-20°C**. **Do not aliquot the antibody.**

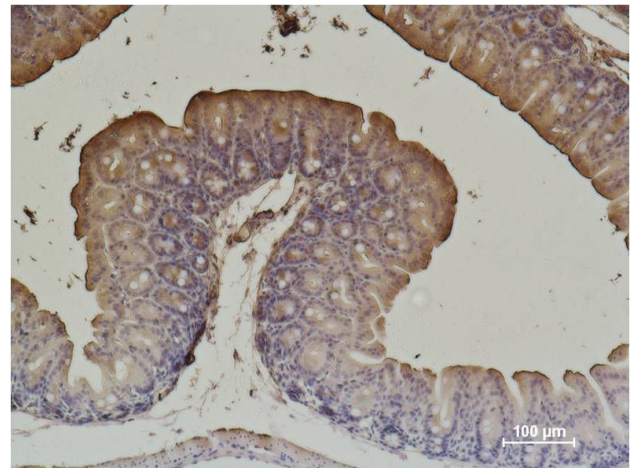
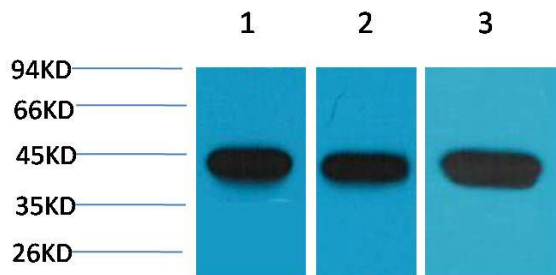
**Recommended dilutions:** WB: 1:10,000-100,000 IHC:1:1,000-2,000

**Optimal dilutions should be determined by the end user.**

**Specificity:** The  $\alpha$ -Smooth Muscle Actin antibody can detect endogenous  $\alpha$ -Smooth Muscle Actin protein.

**Alternative Names:** AAT6 antibody, ACTA2 antibody, alpha actin 2 antibody, GIG46 antibody, ACTSA antibody, ACTVS antibody

**Background:** Actin is a globular multi-functional protein that forms microfilaments. ACTA2 codes for an  $\alpha$ -actin located in the smooth muscle, and also in vascular smooth muscle.



Western blot analysis of 1) Hela, 2)3T3, 3)Rat Brain with  $\alpha$ -Smooth Muscle Actin Mouse mAb TDY341 diluted at 1:1,000,000.

Immunohistochemical analysis of paraffin-embedded Mouse Cecal Tissue using  $\alpha$ -Smooth Muscle Actin (TDY341) Mouse mAb diluted at 1:500.