

TLR1 Rabbit Polyclonal Antibody(M20)

Catalog	TDY366C	TDY366F	Tel: 010-82908854
Quantity	50 μ L	100 μ L	Web: www.tdybio.com
			Entrez-Gene ID:7096 , Swiss-Prot Acc. Q15399

For research use only.

Applications	Species Cross-Reactivity	Molecular Weight	Isotype
IHC	H, R, M	N/A	IgG

Storage Buffer & Condition: Antigen Affinity Purified IgG in PBS, pH 7.4, containing 0.02% **sodium azide** as Preservative and 50% Glycerol.

Store at **-20°C**. **Do not aliquot the antibody.**

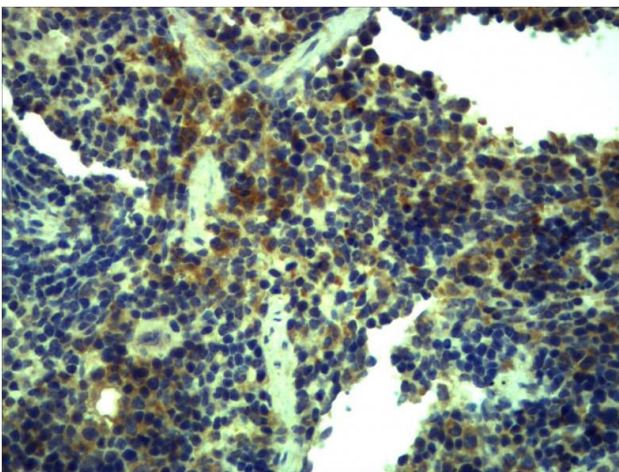
Recommended dilutions: IHC: 1:200-500

Optimal dilutions should be determined by the end user.

Specificity: Antibody can detects endogenous TLR1 protein.

Alternative Names: CD281 antibody, Toll liker receptor 1 antibody, KIAA0012 antibody, LPRS5 antibody

Background: TLR 1 is a member of the Toll-like receptor family (TLR) of pattern recognition receptors of the innate immune system. TLR1 recognizes pathogen-associated molecular pattern with a specificity for gram-positive bacteria. TLR1 has also been designated as CD281.



Immunohistochemical analysis of paraffin-embedded Mouse Spleen Tissue using TLR1 (TDY366) Rabbit pAb diluted at 1:500.