

## Cleaved PARP Mouse Monoclonal Antibody(Mix-mA™)

Catalog	TDY173C	TDY173F
Quantity	50μL	100μL

Tel: 010-82908854  
Free: 400-0620-621  
Web: www.tdybio.com

**For research use only.**

Applications	Species Cross-Reactivity	Molecular Weight	Isotype
WB, IHC	H	116KD(Pro), 89(Active)	IgG1

**Storage Buffer & Condition:** PBS, pH 7.4, containing 0.02% **sodium azide** as Preservative and 50% Glycerol.  
Store at **-20°C**. **Do not aliquot the antibody.**

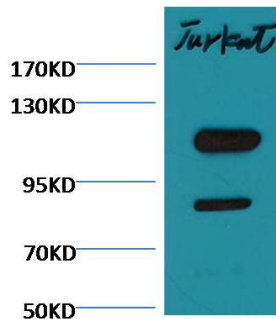
**Recommended dilutions:** WB: 1:2,000-5,000      IHC: 1:200-500

**Optimal dilutions should be determined by the end user.**

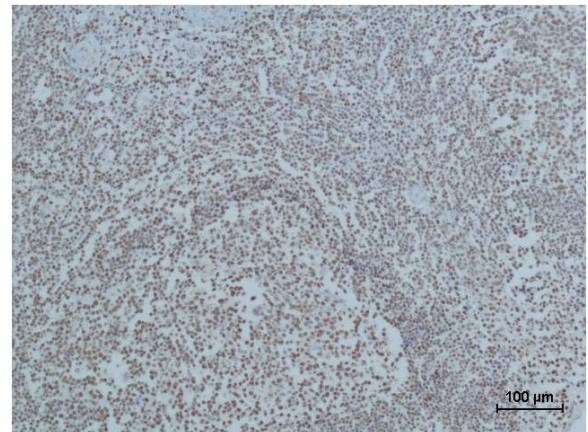
**Specificity:** Antibody can detects endogenous pro and active PARP protein.

**Alternative Names:** PARP-1, Poly(ADP ribose) polymerase 1, sPARP1,ADPRT1, ADP ribosyltransferase NAD(+)

**Background:** Poly [ADP-ribose] polymerase 1 (PARP-1) also known as **NAD<sup>+</sup> ADP-ribosyltransferase 1** or **poly[ADP-ribose] synthase 1** is an enzyme that in humans is encoded by the *PARP1* gene. PARP1 has a role in repair of single-stranded DNA (ssDNA) breaks. Knocking down intracellular PARP1 levels with siRNA or inhibiting PARP1 activity with small molecules reduces repair of ssDNA breaks. In the absence of PARP1, when these breaks are encountered during DNA replication, the replication fork stalls, and double-strand DNA (dsDNA) breaks accumulate.



Western blot analysis of Jurkat with TDY173 diluted at 1:3,000.



Immunohistochemical analysis of paraffin-embedded human Tonsil Tissue using Cleaved PARP (TDY173) Mouse mAb diluted at 1:500.