

CREB Rabbit Polyclonal Antibody

Catalog	TDY203C	TDY203F
Quantity	50 μ L	100 μ L

Tel: 010-82908854
Free: 400-0620-621
Web: www.tdybio.com

For research use only.

Applications	Species Cross-Reactivity	Molecular Weight	Isotype
WB, IHC	H	~37, 43KD	IgG

Storage Buffer & Condition: PBS, pH 7.4, containing 0.02% **sodium azide** as Preservative and 50% Glycerol.
Store at **-20°C**. **Do not aliquot the antibody.**

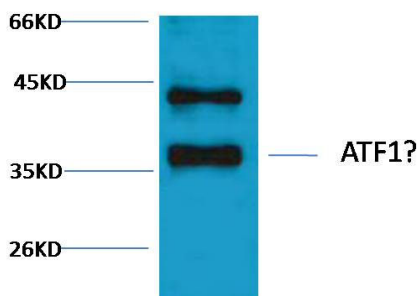
Recommended dilutions: WB: 1:1,000-2,000 IHC: 1:200-500

Optimal dilutions should be determined by the end user.

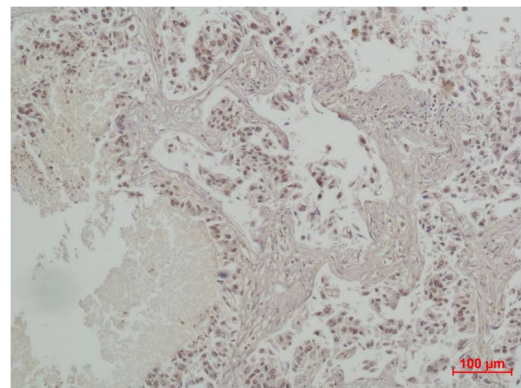
Specificity: The CREB antibody can detects endogenous CREB protein.

Alternative Names: Cyclic AMP-responsive element binding protein 1 antibody, MGC9284 antibody, CREB1 antibody

Background: CREB (cAMP response element-binding protein) is a cellular transcription factor. This protein binds the cAMP response element (CRE), a sequence present in many viral and cellular promoters. CREB is closely related in structure and function to CREM (cAMP response element modulator) and ATF-1 (activating transcription factor-1) proteins. CREB proteins are expressed in many animals.



Western blot analysis of HeLa with TDY203 Rabbit pAb diluted at 1:2,000.



Immunohistochemical analysis of paraffin-embedded human Lung carcinoma using CREB (TDY203) Rabbit pAb diluted at 1:500.