

## Vinculin Rabbit Polyclonal Antibody

Catalog	TDY207C	TDY207F
Quantity	50 $\mu$ L	100 $\mu$ L

Tel: 010-82908854  
Free: 400-0620-621  
Web: www.tdybio.com

**For research use only.**

Applications	Species Cross-Reactivity	Molecular Weight	Isotype
WB, IHC	H, R, M	130KD	IgG

**Storage Buffer & Condition:** PBS, pH 7.4, containing 0.02% **sodium azide** as Preservative and 50% Glycerol.  
Store at **-20°C. Do not aliquot the antibody.**

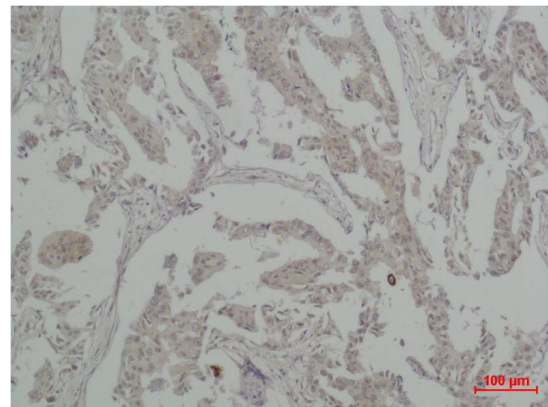
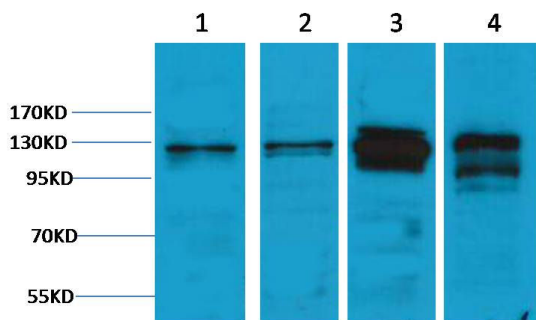
**Recommended dilutions:** WB: 1:1,000-2,000 IHC: 1:200-500

**Optimal dilutions should be determined by the end user.**

**Specificity:** The Vinculin antibody can detect endogenous Vinculin protein.

**Alternative Names:** CMD1W antibody, CMH15 antibody, metavinculin antibody, MVCL antibody, VINC antibody

**Background:** Vinculin is a membrane-cytoskeletal protein in focal adhesion plaques that is involved in linkage of integrin adhesion molecules to the actin cytoskeleton. Vinculin is a cytoskeletal protein associated with cell-cell and cell-matrix junctions, where it is thought to function as one of several interacting proteins involved in anchoring F-actin to the membrane.



Western blot analysis of 1) HeLa, 2) K562, 3) Mouse Brain, 4) Rat Brain tissue with TDY207 diluted at 1:1,000.

Immunohistochemical analysis of paraffin-embedded human Breast carcinoma using Vinculin (TDY207) Rabbit pAb diluted at 1:500.