

α Skeletal Muscle Actin Rabbit Polyclonal Antibody

Catalog	TDY211C	TDY211F
Quantity	50 μ L	100 μ L

Tel: 010-82908854
Free: 400-0620-621
Web: www.tdybio.com

For research use only.

Applications	Species Cross-Reactivity	Molecular Weight	Isotype
WB, IHC	H, R, M	42KD	IgG

Storage Buffer & Condition: PBS, pH 7.4, containing 0.02% **sodium azide** as Preservative and 50% Glycerol.
Store at **-20°C**. **Do not aliquot the antibody.**

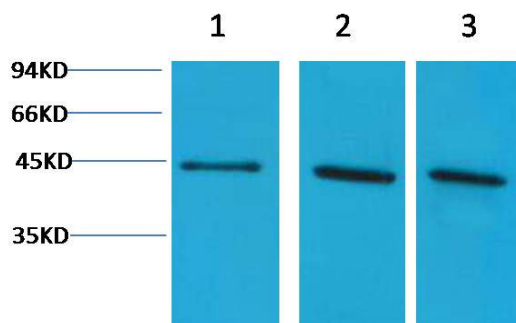
Recommended dilutions: WB: 1:1,000-2,000 IHC: 1:200-500

Optimal dilutions should be determined by the end user.

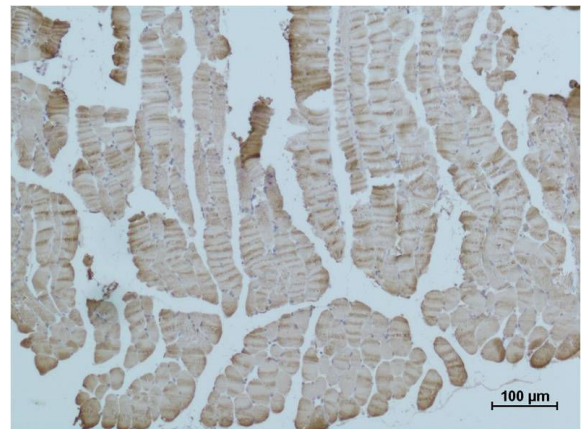
Specificity: The α Skeletal Muscle Actin antibody can detect endogenous α Skeletal Muscle Actin protein.

Alternative Names: ACTA antibody, ACTA1 antibody, ACTC antibody, ACTC1 antibody, Actin alpha cardiac muscle antibody, ACTS antibody, Alpha actin 1 antibody, Cardiac muscle alpha actin 1 antibody, Skeletal muscle alpha actin 1 antibody

Background: Actin, alpha skeletal muscle is a protein that in humans is encoded by the *ACTA1* gene. Actin alpha 1 which is expressed in skeletal muscle is one of six different actin isoforms which have been identified. Actins are highly conserved proteins that are involved in cell motility, structure and integrity. Alpha actins are a major constituent of the contractile apparatus.



Western blot analysis of 1) Hela, 2) 3T3, 3) Rat Kidney tissue with TDY211 diluted at 1:2,000.



Immunohistochemical analysis of paraffin-embedded Mouse Skeletal Muscle Tissue using α skeletal muscle actin (TDY211) Rabbit pAb diluted at 1:500.