

## 14-3-3 ε Rabbit Polyclonal Antibody

Catalog	TDY331C	TDY331F
Quantity	50μL	100μL

Tel: 010-82908854  
Free: 400-0620-621  
Web: www.tdybio.com

**For research use only.**

Applications	Species Cross-Reactivity	Molecular Weight	Isotype
WB, IHC	R, M	28KD	IgG

**Storage Buffer & Condition:** PBS, pH 7.4, containing 0.02% **sodium azide** as Preservative and 50% Glycerol.  
Store at **-20°C**. **Do not aliquot the antibody.**

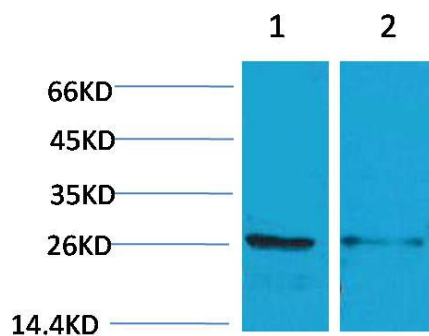
**Recommended dilutions:** WB: 1:1,000 IHC:1:200-500

**Optimal dilutions should be determined by the end user.**

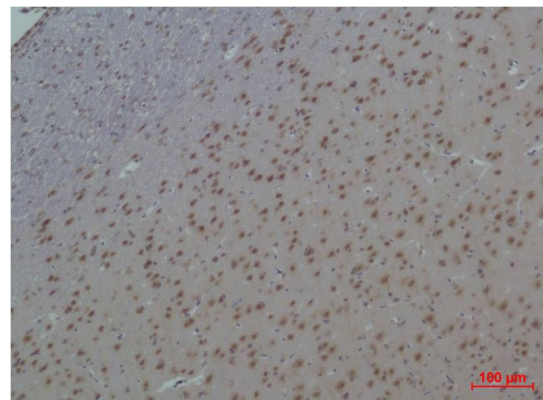
**Specificity:** Antibody can detects endogenous 14-3-3 ε protein.

**Alternative Names:** 14-3-3 E, 14-3-3 epsilon, FLJ45465, MDCR, YWHAE, protein kinase C inhibitor protein 1, MDS, KCIP 1

**Background:** The 14-3-3 family of proteins plays a key regulatory role in signal transduction, checkpoint control, apoptotic and nutrient-sensing pathways. **14-3-3 protein epsilon** is a protein that in humans is encoded by the *YWHAE* gene.



Western blot analysis of 1) Mouse Brain, 2) Rat Brain, with 14-3-3 epsilon Rabbit pAb TDY331 diluted at 1:2,000.



Immunohistochemical analysis of paraffin-embedded Rat Brain Tissue using 14-3-3 epsilon (TDY331) Rabbit pAb diluted at 1:500.