

LC3B Rabbit Polyclonal Antibody(F186)

Catalog	TDY357C	TDY357F	Tel: 010-82908854
Quantity	50 μ L	100 μ L	Web: www.tdybio.com
			Entrez-Gene ID:81631 , Swiss-Prot Acc.Q9GZQ8

For research use only.

Applications	Species Cross-Reactivity	Molecular Weight	Isotype
WB, IHC	H, R, M	14,16KD	IgG

Storage Buffer & Condition: Affinity Purified IgG, PBS, pH 7.4, containing 0.02% **sodium azide** as Preservative and 50% Glycerol.

Store at **-20°C. Do not aliquot the antibody.**

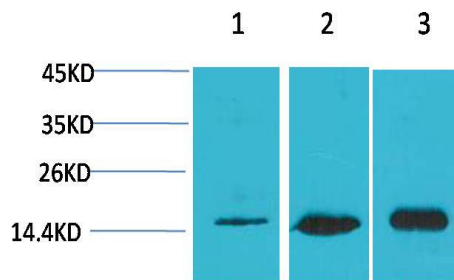
Recommended dilutions: WB: 1:1,000-2,000 IHC: 1:200-500

Optimal dilutions should be determined by the end user.

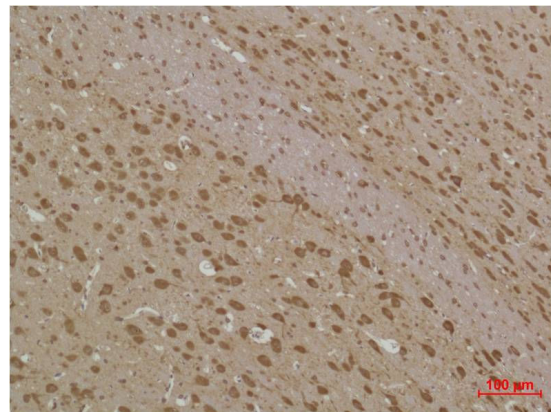
Specificity: Antibody can detects endogenous LC3B protein.

Alternative Names: ATG8F antibody, MAP1 light chain 3 like protein 2 antibody, MAP1A/MAP1B LC3 B antibody

Background: Autophagy marker Light Chain 3 (LC3) was originally identified as a subunit of microtubule-associated proteins 1A and 1B (termed MAP1LC3).



Western blot analysis of 1) HeLa, 2) 3T3, 3) Rat Brain Tissue with LC3B Rabbit pAb TDY357 diluted at 1:2,000.



Immunohistochemical analysis of paraffin-embedded Rat Brain Tissue using LC3B (TDY357) Rabbit pAb diluted at 1:500.