

## Bestrophin-2 Rabbit Polyclonal Antibody(A185)

Catalog TDY360C TDY360F

Tel: 010-82908854

Quantity 50 $\mu$ L 100 $\mu$ L

Web: www.tdybio.com

Entrez-Gene ID:54831 , Swiss-Prot Acc. Q8NFU1

**For research use only.**

Applications	Species	Cross-Reactivity	Molecular Weight	Isotype
WB, IHC		R, M	~50KD	IgG

**Storage Buffer & Condition:** Antigen Affinity Purified IgG in PBS, pH 7.4, containing 0.02% **sodium azide** as Preservative and 50% Glycerol.

Store at **-20°C**. **Do not aliquot the antibody.**

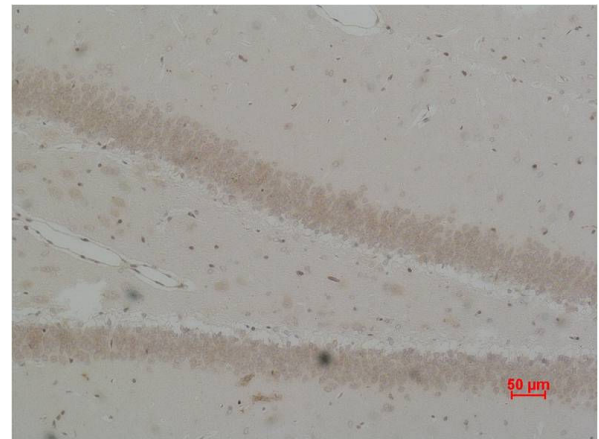
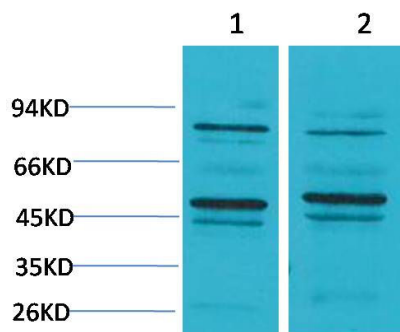
**Recommended dilutions:** WB: 1:500-1,000 IHC: 1:200-500

**Optimal dilutions should be determined by the end user.**

**Specificity:** Antibody can detects endogenous Bestrophin-2 protein.

**Alternative Names:** BEST 2 antibody, FLJ20132 antibody, Vitelliform macular dystrophy 2 homolog antibody

**Background:** The Bestrophins are a newly described family of anion channels unrelated in primary sequence to any previously characterized channel proteins. Two different topologies for Bestrophin-1 have been proposed.



Western blot analysis of 1)Mouse Brain Tissue, 2)Rat Brain Tissue with Bestrophin-2 Rabbit pAb TDY360 diluted at 1:2,000.

Immunohistochemical analysis of paraffin-embedded Rat Brain Tissue using Bestrophin-2 (TDY360) Rabbit pAb diluted at 1:500.