

NMBR (Bombesin Receptor 1) Rabbit Polyclonal Antibody(A186)

Catalog TDY370C TDY370F

Tel: 010-82908854

Quantity 50 μ L 100 μ L

Web: www.tdybio.com

Entrez-Gene ID:4829 , Swiss-Prot Acc.P28336

For research use only.

Applications	Species Cross-Reactivity	Molecular Weight	Isotype
WB, IHC	H, R, M	~50KD	IgG

Storage Buffer & Condition: Antigen Affinity Purified IgG in PBS, pH 7.4, containing 0.02% **sodium azide** as Preservative and 50% Glycerol.

Store at **-20°C. Do not aliquot the antibody.**

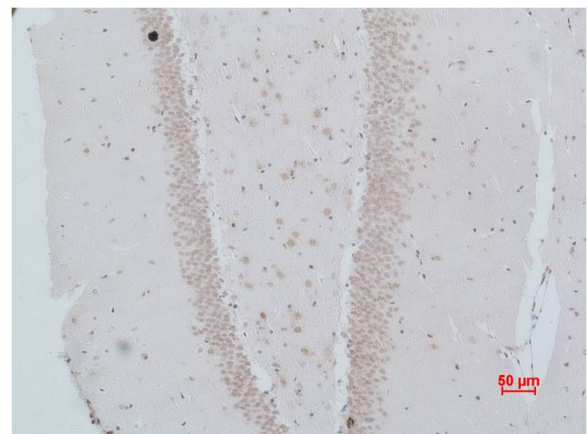
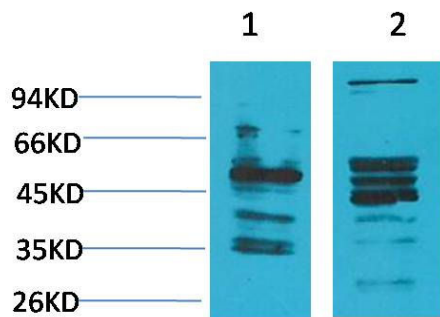
Recommended dilutions: WB: 1:1,000-2,000 IHC: 1:200-500

Optimal dilutions should be determined by the end user.

Specificity: Antibody can detects endogenous NMBR protein.

Alternative Names: Neuromedin B receptor antibody, Bombesin Receptor 1 antibody, BB1 antibody

Background: Receptor for neuromedin-B. Belongs to the G-protein coupled receptor 1 family.



Western blot analysis of 1) Human Brain Tissue, 2)Rat Brain Tissue with NMBR (Bombesin Receptor 1) Rabbit pAb TDY370 diluted at 1:2,000.

Immunohistochemical analysis of paraffin-embedded Rat Brain Tissue using NMBR(Bombesin Receptor 1) (TDY370) Rabbit pAb diluted at 1:500.