

## CALHM1 Rabbit Polyclonal Antibody(A191)

Catalog TDY372C TDY372F

Tel: 010-82908854

Quantity 50 $\mu$ L 100 $\mu$ L

Web: www.tdybio.com

Entrez-Gene ID:255022 , Swiss-Prot Acc. Q8IU99

**For research use only.**

Applications	Species	Cross-Reactivity	Molecular Weight	Isotype
WB, IHC		H, R	~40KD	IgG

**Storage Buffer & Condition:** Antigen Affinity Purified IgG in PBS, pH 7.4, containing 0.02% **sodium azide** as Preservative and 50% Glycerol.

Store at **-20°C. Do not aliquot the antibody.**

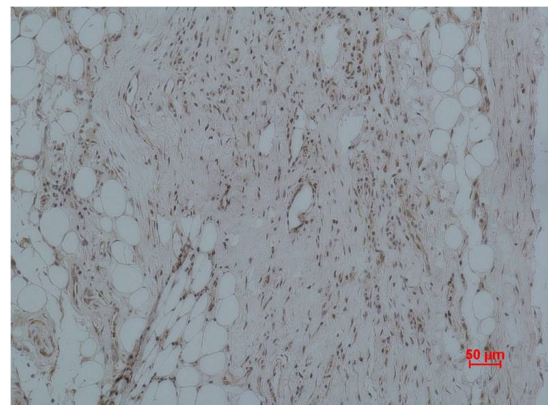
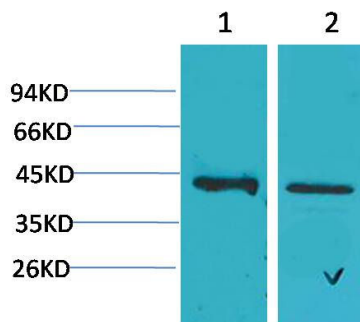
**Recommended dilutions:** WB: 1:500-1,000 IHC: 1:200-500

**Optimal dilutions should be determined by the end user.**

**Specificity:** Antibody can detects endogenous CALHM1 protein.

**Alternative Names:** Calcium Homeostasis modulator 1 antibody, FAM26C antibody, MGC39514 antibody

**Background:** Calcium homeostasis modulator 1 (CALHM1) is a pore-forming membrane protein that in humans is encoded by the *CALHM1* gene.



Western blot analysis of 1) Human Brain Tissue, 2)Rat Brain Tissue with CALHM1Rabbit pAb TDY372 diluted at 1:2,000.

Immunohistochemical analysis of paraffin-embedded Human Hepatocarcinoma using CALHM1 (TDY372) Rabbit pAb diluted at 1:500.