

eEF1A2 binding protein Rabbit Polyclonal Antibody(1)

Catalog TDY377C TDY377F

Tel: 010-82908854

Web: www.tdybio.com

Quantity 50 μ L 100 μ L

Entrez-Gene ID:91156 , Swiss-Prot Acc. Q86VF2

For research use only.

| Applications | Species Cross-Reactivity | Molecular Weight | Isotype |
|--------------|--------------------------|------------------|---------|
| WB, IHC | H, R, M, Pg | 115KD | IgG |

Storage Buffer & Condition: Antigen Affinity Purified IgG in PBS, pH 7.4, containing 0.02% **sodium azide** as Preservative and 50% Glycerol.

Store at **-20°C. Do not aliquot the antibody.**

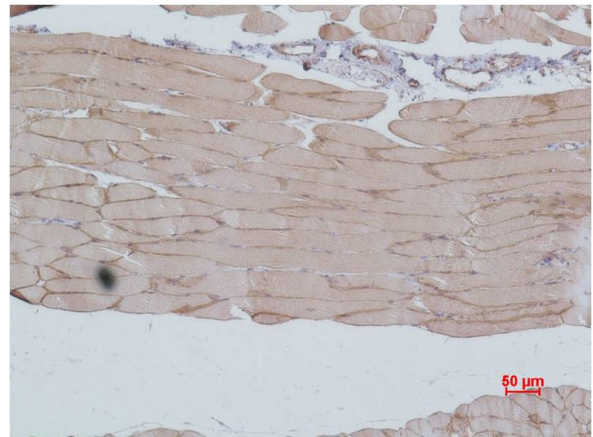
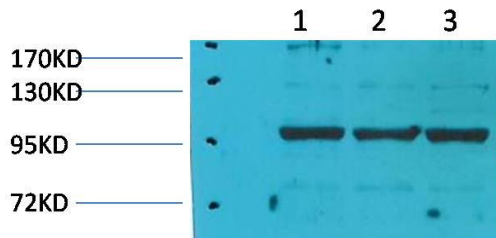
Recommended dilutions: WB: 1:2,000-5,000 IHC: 1:200-500

Optimal dilutions should be determined by the end user.

Specificity: Antibody can detects endogenous eEF1A2 binding protein.

Alternative Names: IGFN1 antibody, immunoglobulin-like and fibronectin type III domain containing 1 antibody, EEF1A2BP1 antibody

Background: Elongation factor 1-alpha 2 is a protein that in humans is encoded by the *EEF1A2* gene. This gene encodes an isoform of the alpha subunit of the elongation factor-1 complex, which is responsible for the enzymatic delivery of aminoacyl tRNAs to the ribosome.



Western blot analysis of 1) Pig Skeletal Muscle Tissue, 2) Rat Skeletal Muscle Tissue, 3) Rat Skeletal Muscle Tissue with eEF1A2 Rabbit pAb TDY377 diluted at 1:5,000.

Immunohistochemical analysis of paraffin-embedded Mouse Skeletal Muscle Tissue using eEF1A2 (TDY377) Rabbit pAb diluted at 1:500.