

Cytochrome C Mouse Monoclonal Antibody(4B10)

Catalog TDY378C TDY378F

Tel: 010-82908854

Quantity 50 μ L 100 μ L

Web: www.tdybio.com

Entrez-Gene ID:54205 , Swiss-Prot Acc. P99999

For research use only.

Applications	Species	Cross-Reactivity	Molecular Weight	Isotype
WB, IHC		H, R, M	14KD	IgG1

Storage Buffer & Condition: PBS, pH 7.4, containing 0.02% **sodium azide** as Preservative and 50% Glycerol.
Store at **-20°C. Do not aliquot the antibody.**

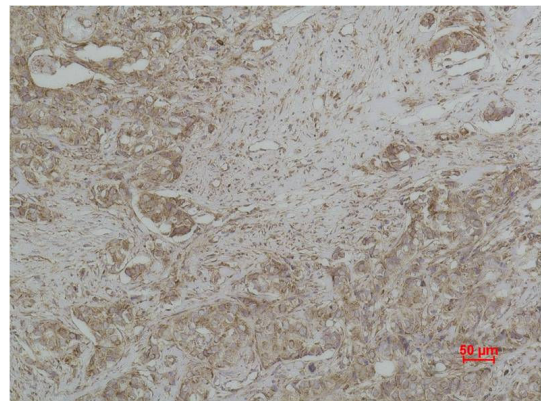
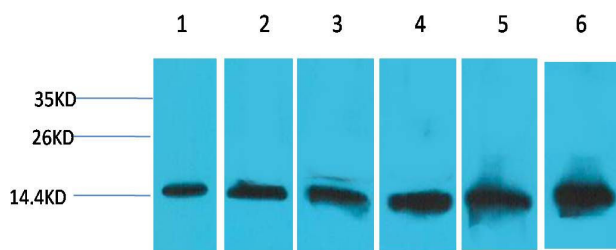
Recommended dilutions: WB: 1:1,000-5,000 IHC: 1:500-1,000

Optimal dilutions should be determined by the end user.

Specificity: Antibody can detects endogenous Cytochrome C protein.

Alternative Names: CYC antibody, CYCS antibody, HCS antibody, THC4 antibody, Cytochrome C somatic antibody

Background: The **cytochrome complex**, or **cyt c** is a small hemeprotein found loosely associated with the inner membrane of the mitochondrion. It belongs to the cytochrome c family of proteins..



Western blot analysis of 1) HeLa, 2) 293T, 3)3T3, 4)Mouse Liver Tissue, 5) Rat Liver Tissue, 6) Rat Kidney Tissue, with Cytochrome C Mouse mAb TDY378 diluted at 1:2,000.

Immunohistochemical analysis of paraffin-embedded human Breast Carcinoma using Cytochrome C (TDY378) Mouse mAb diluted at 1:500.