

SOD1 Rabbit Polyclonal Antibody(F237)

Catalog TDY382C TDY382F

Tel: 010-82908854

Quantity 50 μ L 100 μ L

Web: www.tdybio.com

Entrez-Gene ID:6647 , Swiss-Prot Acc.P00441

For research use only.

Applications	Species Cross-Reactivity	Molecular Weight	Isotype
WB, IHC	H, R, M	~18KD	IgG

Storage Buffer & Condition: Antigen Affinity Purified IgG in PBS, pH 7.4, containing 0.02% **sodium azide** as Preservative and 50% Glycerol.

Store at **-20°C. Do not aliquot the antibody.**

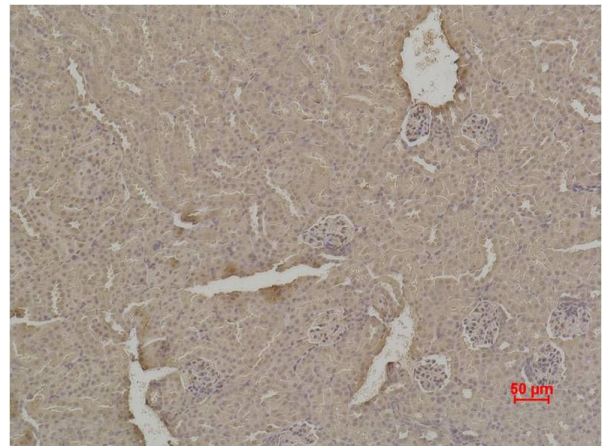
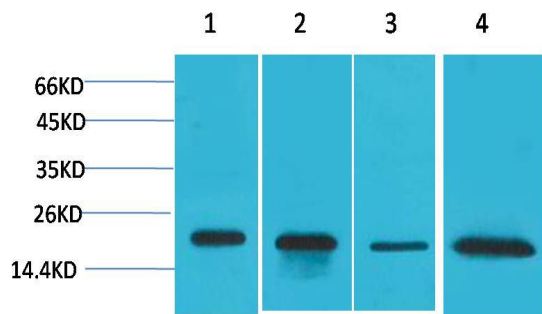
Recommended dilutions: WB: 1:2,000-5,000 IHC: 1:200-500

Optimal dilutions should be determined by the end user.

Specificity: Antibody can detects endogenous SOD1 protein.

Alternative Names: ALS1 antibody, Cu/Zn SOD antibody, Superoxide dismutase 1 antibody

Background: Superoxide dismutase [Cu-Zn] also known as **superoxide dismutase 1** or **SOD1** is an enzyme that in humans is encoded by the *SOD1* gene, located on chromosome 21. SOD1 is one of three human superoxide dismutases.



Western blot analysis of 1) HeLa, 2) MCF7, 3) Mouse Brain Tissue, 4) Rat Brain Tissue, with SOD1 Rabbit pAb TDY382 diluted at 1:2,000.

Immunohistochemical analysis of paraffin-embedded Mouse Kidney Tissue using SOD1 (TDY382) Rabbit pAb diluted at 1:500.