

SOD2 Rabbit Polyclonal Antibody(F238)

Catalog TDY383C TDY383F

Tel: 010-82908854

Quantity 50 μ L 100 μ L

Web: www.tdybio.com

Entrez-Gene ID:6648 , Swiss-Prot Acc.P04179

For research use only.

Applications	Species Cross-Reactivity	Molecular Weight	Isotype
WB, IHC	H, R, M	~22KD	IgG

Storage Buffer & Condition: Antigen Affinity Purified IgG in PBS, pH 7.4, containing 0.02% **sodium azide** as Preservative and 50% Glycerol.

Store at **-20°C. Do not aliquot the antibody.**

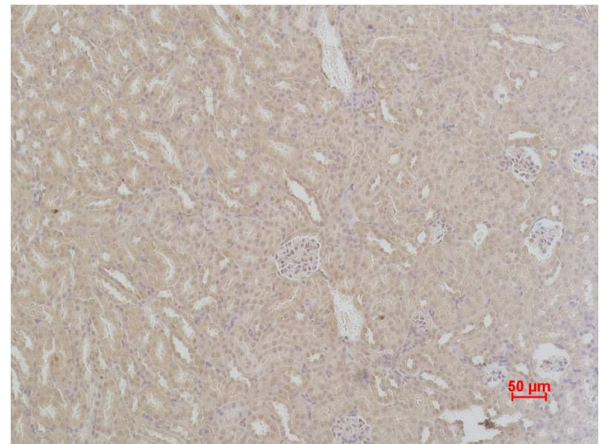
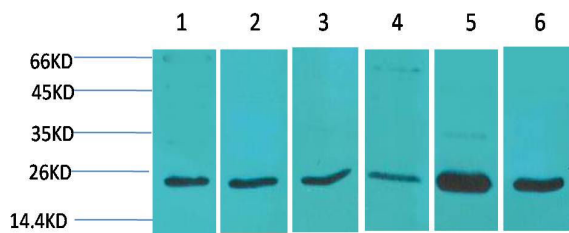
Recommended dilutions: WB: 1:1,000-2,000 IHC: 1:200-500

Optimal dilutions should be determined by the end user.

Specificity: Antibody can detects endogenous SOD2 protein.

Alternative Names: IPO B antibody, Manganese SOD antibody, Superoxide dismutase mitochondrial antibody

Background: **Superoxide dismutase 2, mitochondrial**, also known as **SOD2**, is an enzyme which in humans is encoded by the **SOD2** gene. This gene is a member of the iron/manganese superoxide dismutase family. It encodes a mitochondrial matrix protein that forms a homotetramer and binds one manganese ion per subunit.



Western blot analysis of 1) 293T, 2) HeLa, 3)C2C12, 4)3T3, 5) Rat Liver Tissue, 6) Rat Brain Tissue, with SOD2 Rabbit pAb TDY383 diluted at 1:2,000. Immunohistochemical analysis of paraffin-embedded Mouse Kidney Tissue using SOD2 (TDY383) Rabbit pAb diluted at 1:500.