

Histone H3(Citruline R2+R8+R17) Rabbit Polyclonal Antibody(A281)

Catalog	TDY389C	TDY389F	Tel: 010-82908854
Quantity	50μL	100μL	Free: 400-0620-621
			Entrez-Gene ID:8290 , Swiss-Prot Acc.P68431

For research use only.

Applications	Species Cross-Reactivity	Molecular Weight	Isotype
WB, IHC	H, R, M	15-17KD	IgG

Storage Buffer & Condition: Antigen Affinity Purified Rabbit IgG, 1mg/ml in PBS pH7.4, containing 0.02% sodium azide as Preservative and 50% Glycerol.

Store at **-20°C**. **Do not aliquot the antibody.**

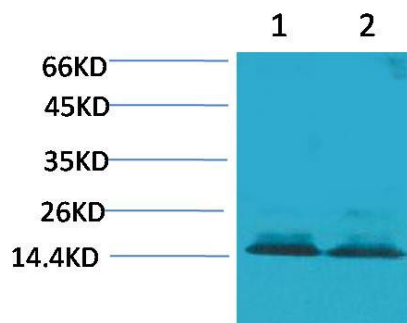
Recommended dilutions: WB: 1:500-1,000 IHC: 1:100-200

Optimal dilutions should be determined by the end user.

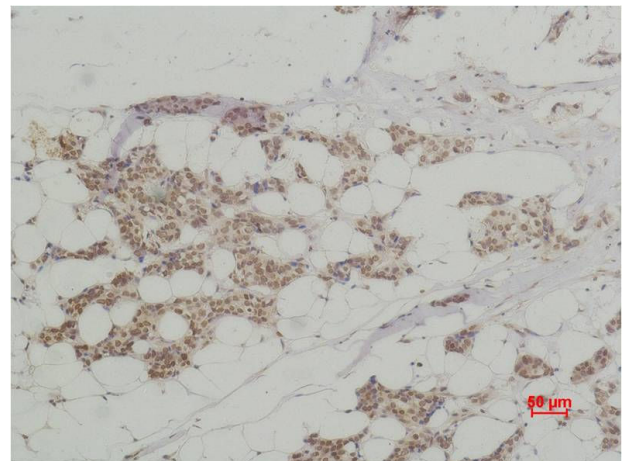
Specificity: The Histone H3(Citruline R2+R8+R17) Rabbit Polyclonal Antibody can detects endogenous Histone H3 (Citruline R2+R8+R17) protein.

Alternative Names: H3 histone antibody, HIST1H3A antibody, Histone cluster 1, H3a antibody

Background: Histone H3 is one of the five main histone proteins involved in the structure of chromatin in eukaryotic cells. Core component of nucleosome. Nucleosomes wrap and compact DNA into chromatin, limiting DNA accessibility to the cellular machineries which require DNA as a template. Histones thereby play a central role in transcription regulation, DNA repair, DNA replication and chromosomal stability.



Western blot analysis of 1) HeLa, 2) 3T3, with Histone H3(Citruline R2+R8+R17) Rabbit pAb TDY389 diluted at 1:2,000.



Immunohistochemical analysis of paraffin-embedded human Breast carcinoma using Histone H3(Citruline R2+R8+R17) (TDY389) Rabbit pAb diluted at 1:500.