

STAT2 Rabbit Polyclonal Antibody(F242)

Catalog	TDY392C	TDY392F
Quantity	50 μ L	100 μ L

Tel: 010-82908854
Web: www.tdybio.com
Entrez-Gene ID:6773 , Swiss-Prot Acc.P52630

For research use only.

Applications	Species Cross-Reactivity	Molecular Weight	Isotype
WB, IHC	H, R, M	~98KD	IgG

Storage Buffer & Condition: Antigen Affinity Purified IgG in PBS, pH 7.4, containing 0.02% **sodium azide** as Preservative and 50% Glycerol.

Store at **-20°C**. **Do not aliquot the antibody.**

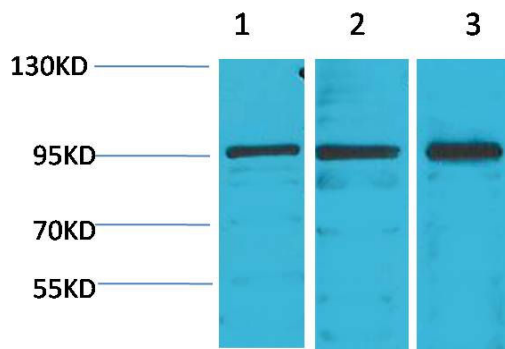
Recommended dilutions: WB: 1:1,000-2,000 IHC: 1:200-500

Optimal dilutions should be determined by the end user.

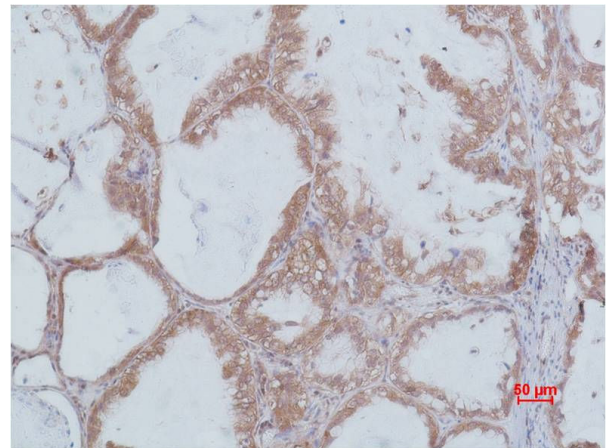
Specificity: Antibody can detects endogenous STAT2 protein.

Alternative Names: ISGF 3 antibody, p113 antibody, STAT113 antibody, MGC59816 antibody

Background: Signal transducer and activator of transcription that mediates signaling by type I IFNs (IFN-alpha and IFN-beta). Following type I IFN binding to cell surface receptors, Jak kinases (TYK2 and JAK1) are activated, leading to tyrosine phosphorylation of STAT1 and STAT2.



Western blot analysis of 1) K562, 2) Mouse Heart Tissue, 3) Rat Heart Tissue, with STAT2 Rabbit pAb TDY392 diluted at 1:2,000.



Immunohistochemical analysis of paraffin-embedded Human Lung carcinoma using STAT2 (TDY392) Rabbit pAb diluted at 1:500.