

## Smad3 Rabbit Polyclonal Antibody(F233)

Catalog TDY393C TDY393F

Tel: 010-82908854

Quantity 50 $\mu$ L 100 $\mu$ L

Web: [www.tdybio.com](http://www.tdybio.com)

Entrez-Gene ID:4088 , Swiss-Prot Acc.P84022

**For research use only.**

Applications	Species Cross-Reactivity	Molecular Weight	Isotype
WB, IHC	H, R, M	~50KD	IgG

**Storage Buffer & Condition:** Antigen Affinity Purified IgG in PBS, pH 7.4, containing 0.02% **sodium azide** as Preservative and 50% Glycerol.

Store at **-20°C**. **Do not aliquot the antibody.**

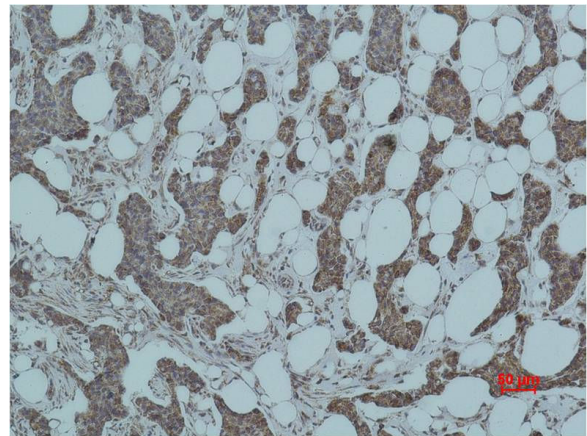
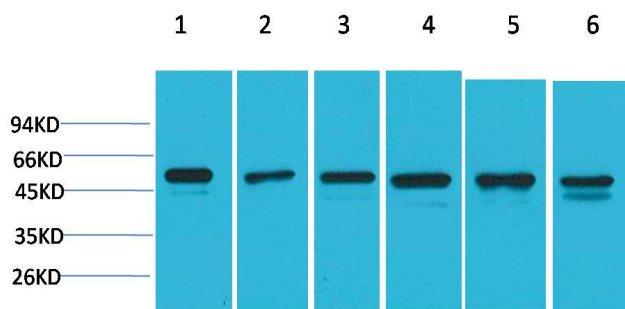
**Recommended dilutions:** WB: 1:1,000-2,000 IHC:1:200-500

**Optimal dilutions should be determined by the end user.**

**Specificity:** Antibody can detects endogenous Smad3 protein.

**Alternative Names:** hMAD3 antibody, HSPC193 antibody, LDS1C antibody, MADH3 antibody, JV15 2 antibody

**Background:** Receptor-regulated SMAD (R-SMAD) that is an intracellular signal transducer and transcriptional modulator activated by TGF-beta (transforming growth factor) and activin type 1 receptor kinases. Binds the TRE element in the promoter region of many genes that are regulated by TGF-beta and, on formation of the SMAD3/SMAD4 complex, activates transcription.



Western blot analysis of 1) A431, 2) HeLa, 3)C2C12, 4)3T3, 5) PC12, 6) Rat Brain Tissue, with Smad3 Rabbit pAb TDY393 diluted at 1:2,000.

Immunohistochemical analysis of paraffin-embedded human Breast carcinoma using Smad3 (TDY393) Rabbit pAb diluted at 1:500.