

## SOD2 Rabbit Polyclonal Antibody(F239)

Catalog TDY397C TDY397F

Tel: 010-82908854

Quantity 50 $\mu$ L 100 $\mu$ L

Web: www.tdybio.com

Entrez-Gene ID:6648 , Swiss-Prot Acc.P04179

**For research use only.**

Applications	Species	Cross-Reactivity	Molecular Weight	Isotype
WB, IHC	H, R, M		~22KD	IgG

**Storage Buffer & Condition:** Antigen Affinity Purified IgG in PBS, pH 7.4, containing 0.02% **sodium azide** as Preservative and 50% Glycerol.

Store at **-20°C**. **Do not aliquot the antibody.**

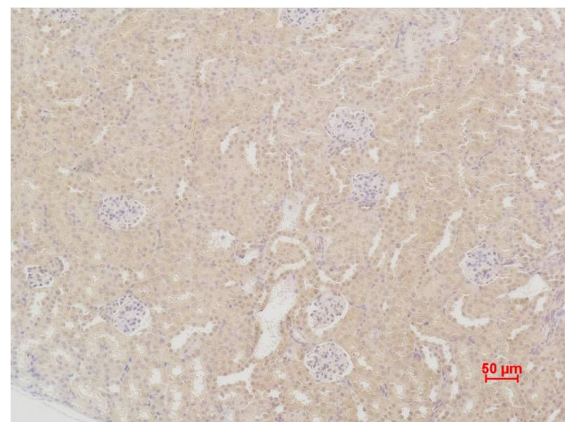
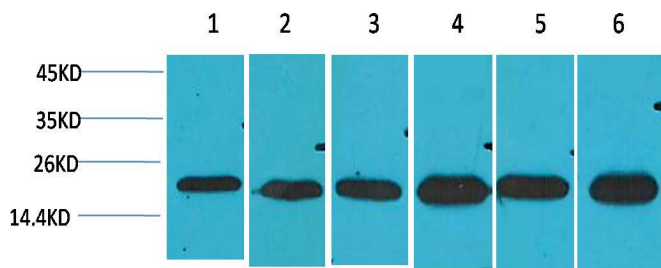
**Recommended dilutions:** WB: 1:1,000-2,000 IHC:1:200-500

**Optimal dilutions should be determined by the end user.**

**Specificity:** Antibody can detects endogenous SOD2 protein.

**Alternative Names:** IPO B antibody, Manganese SOD antibody, Superoxide dismutase mitochondrial antibody

**Background:** **Superoxide dismutase 2, mitochondrial**, also known as **SOD2**, is an enzyme which in humans is encoded by the **SOD2** gene. This gene is a member of the iron/manganese superoxide dismutase family. It encodes a mitochondrial matrix protein that forms a homotetramer and binds one manganese ion per subunit.



Western blot analysis of 1) HeLa, 2)HepG2, 3)C2C12, 4) Mouse Liver Tissue, 5) Rat Brain Tissue, 6) Rat Liver Tissue with SOD2 Rabbit pAb TDY397 diluted at 1:2,000

Immunohistochemical analysis of paraffin-embedded Mouse Kidney Tissue using SOD2 (TDY397) Rabbit pAb diluted at 1:200.