

STAT2 Rabbit Polyclonal Antibody(F243)

Catalog	TDY398C	TDY398F	Tel: 010-82908854
			Web: www.tdybio.com
Quantity	50 μ L	100 μ L	Entrez-Gene ID:6773 , Swiss-Prot Acc.P52630

For research use only.

Applications	Species Cross-Reactivity	Molecular Weight	Isotype
WB	H, R, M	113KD	IgG

Storage Buffer & Condition: Antigen Affinity Purified IgG in PBS, pH 7.4, containing 0.02% **sodium azide** as Preservative and 50% Glycerol.

Store at **-20°C**. **Do not aliquot the antibody.**

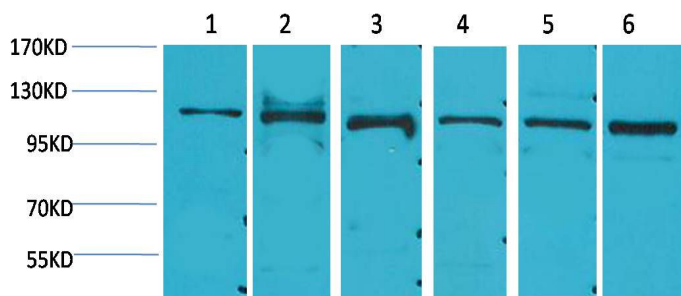
Recommended dilutions: WB: 1:500-1,000

Optimal dilutions should be determined by the end user.

Specificity: Antibody can detects endogenous STAT2 protein.

Alternative Names: ISGF3 antibody, P113 antibody, STAT113 antibody, MGC59816 antibody

Background: Signal transducer and activator of transcription 2 is a protein that in humans is encoded by the *STAT2* gene. Stat2 is rapidly activated by phosphorylation at Tyr690 in response to stimulation by IFN-alpha/beta via associations with receptor-bound Jak kinases.



Western blot analysis of 1) HeLa, 2)K562, 3)3T3, 4) Mouse Heart Tissue, 5) Rat Heart Tissue, 6) Rat Kidney Tissue with STAT2 Rabbit pAb TDY398 diluted at 1:2,000.