

β I tubulin Mouse Monoclonal Antibody(3F7)

Catalog	TDY050C	TDY050F
Quantity	50μL	100μL

Tel: 010-82908854
Free: 400-0620-621
Web: www.tdybio.com

For research use only.

Applications	Species Cross-Reactivity	Molecular Weight	Isotype
WB, IHC	H, R, M	50KD	IgG1

Storage Buffer & Condition: PBS, pH 7.4, containing 0.02% **sodium azide** as Preservative and 50% Glycerol.
Store at **-20°C. Do not aliquot the antibody.**

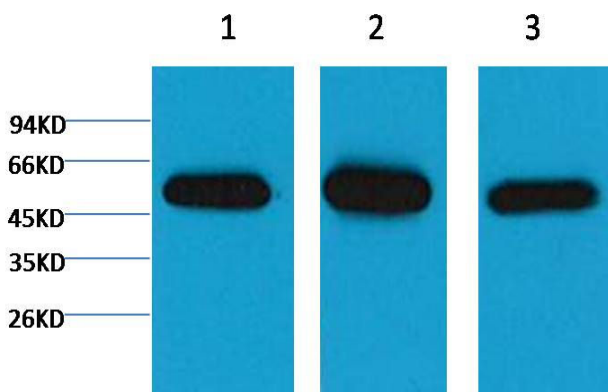
Recommended dilutions: WB: 1:5,000-10,000 IHC: 1:200-500

Optimal dilutions should be determined by the end user.

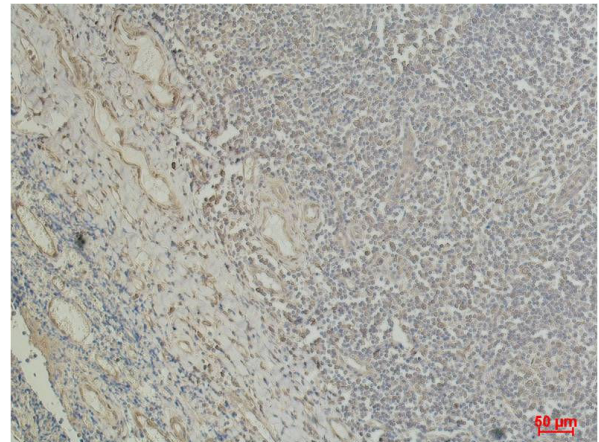
Specificity: The β I tubulin antibody can recognize endogenous β I tubulin proteins.

Alternative Names: beta I tubulin, TBB1, TUBB1, Tubulin beta 1, Class VI beta tubulin

Background: Tubulin is one of several members of a small family of globular proteins. The tubulin superfamily includes five distinct families, the alpha-, beta-, gamma-, delta-, and epsilon-tubulins. The most common members of the tubulin family are α-tubulin and β-tubulin, the proteins that make up microtubules. Each has a molecular weight of approximately 55 KD. Microtubules are assembled from dimers of α- and β-tubulin.



Western blot analysis of 1) HeLa, 2) Mouse Brain Tissue, 3) Rat Brain Tissue with TDY050 diluted at 1:5,000.



Immunohistochemical analysis of paraffin-embedded Human Tonsil Tissue using β I tubulin (TDY050) Mouse mAb diluted at 1:500.