

EGFR Mouse Monoclonal Antibody(M6)

Catalog	TDY162C	TDY162F
Quantity	50 μ L	100 μ L

Tel: 010-82908854
Free: 400-0620-621
Web: www.tdybio.com

For research use only.

Applications	Species Cross-Reactivity	Molecular Weight	Isotype
WB, IP, IF, IHC	H	170KD	IgG1

Storage Buffer & Condition: PBS, pH 7.4, containing 0.02% **sodium azide** as Preservative and 50% Glycerol.
Store at **-20°C. Do not aliquot the antibody.**

Recommended dilutions: WB: 1:1,000-3,000 IP:1:200 IF: 1:100-200 IHC: 1:100-200

Optimal dilutions should be determined by the end user.

Specificity: Antibody can detects endogenous EGFR protein.

Alternative Names: Epidermal growth factor receptor antibody, erbB 1 antibody, Receptor tyrosine protein kinase ErbB 1 antibody

Background: The epidermal growth factor receptor (EGFR; ErbB-1; HER1 in humans) is the cell-surface receptor for members of the epidermal growth factor family (EGF-family) of extracellular protein ligands. Known ligands include EGF, TGFA/TGF- α , amphiregulin, epigen/EPGN, BTC/betacellulin, epiregulin/EREG and HBEGF/heparin-binding EGF. Ligand binding triggers receptor homo- and/or heterodimerization and autophosphorylation on key cytoplasmic residues. The phosphorylated receptor recruits adapter proteins like GRB2 which in turn activates complex downstream signaling cascades.



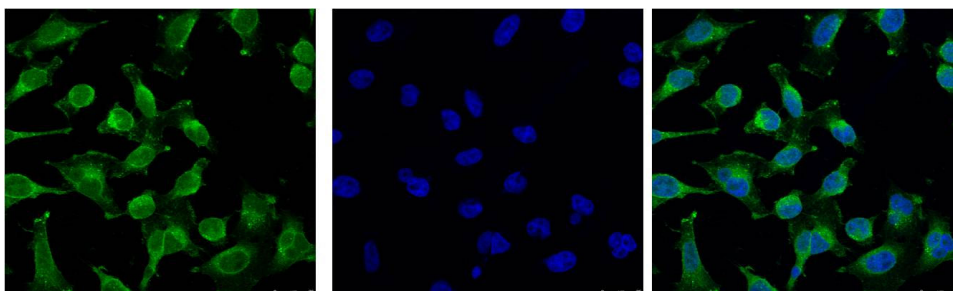
Western blot analysis of 1) A431, 2) HeLa, with TDY162 diluted at 1:2,000.

1, Input: HeLa Cell Lysate

2, IP product: IP dilute 1:200

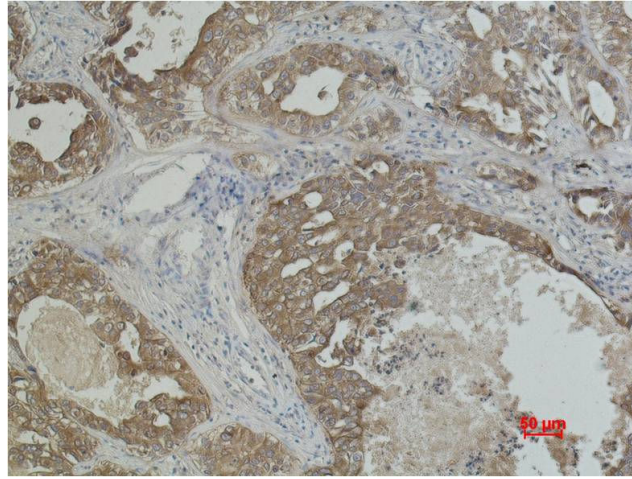
Western blot analysis: primary antibody : TDY162 1:1,000

Secondary antibody: Goat anti-Mouse IgG, Heavy Chain Specific(S003),
1:5,000



IF analysis of HeLa with TDY162(Left) and DAPI (Right) diluted at 1:100.

Applications: WB-Western blot IHC-Immunochemistry IF-Immunofluorescence IP-Immunoprecipitation ChIP-Chormatin Immunoprecipitation
Reactivity: H-Human R-Rat M-Mouse Mk-Monkey Dg-Dog Ch-Chicken Hm-Hamster Rb-Rabbit Sh-Sheep Pg-Pig Z-Zebrafish



Immunohistochemical analysis of paraffin-embedded Human Lung Carcinoma using EGFR (TDY162) Mouse mAb diluted at 1:200.