

## Histone H1 Rabbit Polyclonal Antibody

Catalog	TDY209C	TDY209F
Quantity	50 $\mu$ L	100 $\mu$ L

Tel: 010-82908854  
Free: 400-0620-621  
Web: www.tdybio.com

**For research use only.**

Applications	Species Cross-Reactivity	Molecular Weight	Isotype
WB, IHC	H, M	17-25KD	IgG

**Storage Buffer & Condition:** PBS, pH 7.4, containing 0.02% **sodium azide** as Preservative and 50% Glycerol.  
Store at **-20°C**. **Do not aliquot the antibody.**

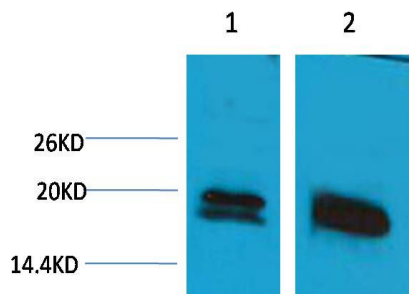
**Recommended dilutions:** WB: 1:1,000-2,000      IHC: 1:100-200

**Optimal dilutions should be determined by the end user.**

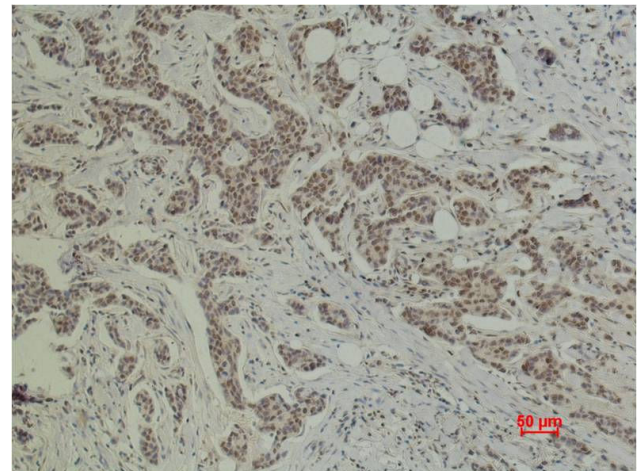
**Specificity:** The Histone H1 antibody can detects endogenous Histone H1 protein.

**Alternative Names:** H1 antibody, HIST1H1B antibody, Histone 1 antibody, Histone H1a antibody

**Background:** Histone H1 is one of the five main histone protein families which are components of chromatin in eukaryotic cells. May play a key role in the control of gene expression during oogenesis and early embryogenesis, presumably through the perturbation of chromatin structure.



Western blot analysis of 1) HeLa, 2)3T3 with TDY209 diluted at 1:1,000.



Immunohistochemical analysis of paraffin-embedded Human Breast Carcinoma using Histone H1 (TDY209) Rabbit pAb diluted at 1:200.